



POSTGRADUATE STUDY & RESEARCH

HANDBOOK 2019



CIT School of Graduate Studies
t: 021 433 5099 e: graduate.school@cit.ie

www.cit.ie/graduateschool



WELCOME

FROM THE DEAN OF GRADUATE STUDIES

Every year a growing number of graduates select CIT as the destination of choice for their postgraduate education. As a CIT Masters or PhD student, you can expect the support of staff that will guide and mentor you along your chosen career path. Whether pursuing a research or taught programme, you can expect to work on solving complex problems in cutting-edge research and innovation that is linked directly to Ireland's smart economy in areas such as business, humanities, engineering, art, bioinformatics, optoelectronics, medical devices, sustainable energy, exercise & health, media & communications technologies, electronics, information technology, entrepreneurship, marketing, and music. Of course, it also helps greatly that CIT boasts state-of-the-art buildings and laboratories with world-class facilities that enable postgraduate students to reach their full potential. The fact that CIT researchers attract funding from enterprise and from a wide range of National, European and International funding programmes provides the financial engine that supports these graduates in following their postgraduate dream.

So, the clear message here is: as a highly-motivated, ambitious graduate, why not avail of the opportunities at CIT for a Masters or PhD by research? Learning at CIT gives you a choice of four campuses distributed across a compact city with a vibrant sporting, music and cultural life. And when the time comes to leave CIT, you will join our 100,000 plus graduates, with many of our alumni reaching the top of their professions. You will definitely make a great investment in your future by choosing a CIT postgraduate programme.



Dr Stephen Cassidy
Dean of Graduate Studies

CONTENTS

About Cork Institute of Technology	6
International Students	10
Postgraduate Fees	13
School of Graduate Studies	15
Postgraduate Degree by Research	16
Postgraduate Degree Programmes (Taught)	20-52

Business & Humanities	20
----------------------------------	-----------

MSc in Marketing Practice	21
MSc in International Business	22
MA in Global Business Practice	23
MSc in Digital Marketing Strategy	24
MA in Human Resource Management	25
Master of Business Administration (MBA) in Strategy	26
MA in Integrative Psychotherapy	27
MA in Play Therapy	28

Engineering	29
--------------------	-----------

MEng in Civil Engineering (Environment and Energy)	30
MEng in Structural Engineering	31
MEng in Chemical & Biopharmaceutical Engineering	32
MSc in Construction Project Management	33
MEng in Embedded Systems Engineering	34
M.Arch (Architecture)	35

Science & Informatics 36

MSc in Cloud Computing	37
MSc in Information Security	38
MSc in Information Design & Development	39
MSc in Software Architecture & Design	40
MSc in Artificial Intelligence	41
MSc in Data Science & Analytics	42

Music 43

MA / MSc in Music & Technology	44
MA in Music (Performance/Conducting/Composition)	45

Art, Design & Media Communications 46

MA in Art Therapy	47
MA in Art & Process	48
Professional Master of Education (Art & Design)	49
MA in E-learning Design and Development	50
MA in Journalism and Digital Content Creation	51
MA in Public Relations with New Media	52

Graduate Profiles at a Glance 53



Note: This symbol indicates that International Students are eligible to apply for this course.



ABOUT

CORK INSTITUTE OF TECHNOLOGY

www.cit.ie

CIT has four principal Campuses:

- Bishopstown Campus situated in the suburbs of Cork City
- CIT Crawford College of Art & Design (CIT CCAD) situated in Cork City
- CIT Cork School of Music (CIT CSM) situated in Cork City
- National Maritime College of Ireland (NMCI) situated in Ringaskiddy, Cork Harbour.

Bishopstown Campus

The Bishopstown Campus is the main centre, and is the location for courses in Business, Science, Computing, Engineering and Humanities. Also located here are Student Services, Administration, Research Centres and Industry Support Centres. The Bishopstown Campus is situated in the western suburbs of Cork city. Leisureworld Sports Centre, which includes both a 25m and an 18m swimming pool, is right next door. Just a few minutes walk away are the suburbs of Bishopstown and Wilton with shops, restaurants and sports facilities. The city centre is just a short bus ride away.

The Student Centre is the main focus for student activity and leisure. It has all the services you could hope for, such as a common room, restaurant, meeting rooms, bank, supermarket, and various student services.

The Bishopstown Campus is home to the Institute's three research centres covering the areas of the Internet of Things, Photonics and Lifesciences & Wellbeing. They occupy two state-of-the-art research buildings and are home to over 150 researchers working on fascinating research for society and industry.

The Rubicon Centre is a business incubation centre for young graduates. It provides a supportive on-campus environment for start-up businesses. The CIT Information Technology Centre consists of computer laboratories, seminar rooms and open access computer stations for hundreds of students. All these computers are fully networked and online.

The library provides books, journals, audio-visual and electronic information resources appropriate to all subjects taught in the Institute. The library provides access to online resources; including journals, standards, and reports, and electronic catalogues of worldwide libraries; and 500 study places.



CIT Crawford College of Art & Design (CCAD)

<https://crawford.cit.ie>

CIT Crawford College of Art & Design is a Constituent College of CIT. CIT Crawford College of Art & Design (CCAD) is a vibrant multi-campus College, which has been providing education in Art for over 200 years.

Crawford graduates are among Ireland's top artists, designers, media designers and communicators, art therapists and art educationalists. Whether you are interested in Fine Art or Contemporary Applied Art, Visual Communications or Multimedia or hoping to do postgraduate study in Art Therapy, Art & Design Education, Art & Process, E-learning Design and Development, Journalism or Public Relations with New Media - we have something for you.

The vibrant city of Cork - known as the City of Festivals - is home to national and international art galleries, the National Sculpture Factory, a range of artist led initiatives such as Cork Printmakers, the Backwater Artists Group and the Guesthouse, and of course, is an ideal place to work in the creative industries.

Facilities include lecture rooms, library, studios, and personal work-areas for students. There are well equipped workshops and laboratories for an extensive range of specialist areas. The CCAD annual Degree Show is one of the highlights of the arts calendar in Cork.



CIT Cork School of Music (CSM)

<https://csm.cit.ie>

CIT Cork School of Music is a Constituent School of CIT. The CSM has many award winning bands, chamber music ensembles, choirs, drama groups, opera groups, and orchestras - with the senior ones undertaking extensive national and international tours, broadcasting, and making commercial recordings.

Facilities: A purpose-built home for the CSM opened in September 2007 and provides nearly 13,000m² of state-of-the-art facilities. This was supplied by means of a Public Private Partnership (Department of Education & Science & Hochtief PPP Solutions). It includes:

- 60 teaching/practice studios (equipped with a fleet of Steinway grand pianos)
- 385-seater auditorium
- 120-seater drama theatre
- Movement room & changing facilities
- Professional 48-track, digital HD recording studio
- Electronic music studio
- Piano labs
- Audio lab
- MusicIT lab
- Double bass studio
- Early music (organ & harpsichord) studio
- Harp studio
- Percussion studio
- Postgraduate centre



National Maritime College of Ireland (NMCI)

www.nmci.ie

This purpose built College is on a 10 acre campus and located 18km from Cork city, in Ringaskiddy, Co. Cork. It provides training and education for the Merchant Marine and the non-military needs of the Irish Naval Service. Specialist spaces including survival facilities, seamanship and shipwrights' workshops, fire fighting/damage control, jetty and lifeboat facilities and engine room are provided.

The College also provides specialised simulation equipment in the areas of navigation, bridge training, communications, engineering machinery operations, liquid cargo handling/damage control and vessel traffic systems. These facilities fully comply with the most up to date international standards and requirements.

The NMCI houses the Halpin Centre for Maritime Research which is Ireland's only research centre devoted to the global maritime industry. Halpin researchers work with collaborators in over 23 countries and use the latest technologies on sea, land and space to solve complex multidisciplinary problems.

**Cork Institute of Technology and
The Institute of Technology Tralee
are working together to create the
Munster Technological University.**

**TOGETHER
WE ARE**

18,000+
LEARNERS

6
CAMPUSES
ACROSS CORK
AND KERRY

140+
COURSES AND
PROGRAMMES

100+
CLUBS AND
SOCIETIES

MTU will be a centre of excellence in education,
research and engagement for **career-focused
learners seeking enterprise and community-ready
qualifications and experiences.** Our entrepreneurial
focus opens a world of opportunities.

Follow our journey www.mtu.ie   

OLLSCOIL TEICNEOLAÍOCHTA na MUMHAN

LEADING RESEARCH

MULTI-DISCIPLINARY,
INDUSTRY-FOCUSED
RESEARCH PROGRAMMES
WITH NATIONAL AND
INTERNATIONAL PARTNERS

PARTNERING INDUSTRY

DYNAMIC CROSS-SECTOR
RELATIONSHIPS WITH
START-UPS, INNOVATORS
AND INDUSTRY LEADING
COMPANIES

INVESTING IN THE FUTURE

STATE-OF-THE-ART
RESEARCH, EDUCATION,
ENTERPRISE, CULTURAL
AND SPORTS FACILITIES



INTERNATIONAL STUDENTS



Note: This symbol indicates that International Students are eligible to apply for this course.



<https://international.cit.ie>

CIT's excellence in higher education is recognised worldwide, with close to 500 international students enrolled from over 50 different countries. We have over 180 international institutional partners, and welcome visiting staff and students from all over Europe, USA, Canada, Malaysia, India, the Middle East and Vietnam every year.

Internationalisation is central to CIT's ambitions, and our vision is "to develop graduates as global citizens who have the necessary abilities and confidence to live, work, achieve and participate fully in an international environment".

CIT's International Office provides end-to-end support to both incoming and outgoing students embarking on an international experience. CIT's International Student Society is the only society in Ireland that has won Best Society at the BICS Awards on three occasions and is therefore an invaluable support to help international students adjust to a new culture and meet new friends from all over the world!

How to apply as an International Student

To apply, please e-mail the following documents to international@cit.ie:

- Completed **Application Form**:
<https://international.cit.ie/Applyhere>
- **Birth Certificate OR Photo Page of Passport – Photocopy** of either document
- **School Leaving Examination Certificate OR High School Transcript**. Include forecast results if final results are not available.
- **Academic Transcript and Proof of Final Degree** (required for transfer and postgraduate applicants) & Academic Marking/Grading Scheme
- **English Language Proficiency** score for applicants whose first language is not English. i.e. IELTS Academic Certificate, TOEFL.
- **Curriculum Vitae/Résumé**



“CIT’s hands-on approach to learning really gives you a practical insight into your degree, and the industry you are hoping to enter into.”

Crystal Anderson, MA in Public Relations and New Media

Testimonials



“I have become more knowledgeable and open-minded due to this experience, and have made memories that will last me a lifetime.”

Madison Ward, MSc in International Business



“The academic staff of CIT are very helpful with many often going beyond the call of duty to assist me in my research work.

With staff and students alike being approachable, making friends is very easy. This is an important aspect to consider for overseas students being far from home.”

Quang An Phan, PhD Researcher





Closing Date: 31st May 2019

International Tuition Fees/Scholarships

The current annual tuition fee in CIT is €12,000 for all levels of study. There are a limited number of scholarships available. Please refer to international.cit.ie/fees for more information. Students will be evaluated for scholarship eligibility based on the documents submitted as part of their application.

Accommodation

CIT does not have on-campus accommodation, but there are several student apartment complexes in close proximity to the campus, please check the Accommodation website for details and rates: www.cit.ie/studentlife/accommodation/. We recommend that you book your accommodation as soon as you receive an offer from CIT, as there has been a significant shortage of accommodation for students in Cork in recent times.



Student Visa

You may be required to apply for a study visa if you are offered a place in CIT. Please check inis.gov.ie for more information. On arrival to Ireland, the CIT International Office will guide you through the local registration process here in Cork. There is a €300 fee for registration and you will be issued an Irish Residence Permit (IRP) identification card. You will also need to provide evidence of at least €3,000 in your bank account, or evidence of being supported through a scholarship programme.

Graduate Visa

International students are eligible to apply for a graduate visa following successful completion of their programme. Graduates with an award at Level 8 on the National Framework of Qualifications will be granted a 1 year visa, and graduates with an award at Level 9 or above on the National Framework of Qualifications will be granted a 2 year visa. The purpose of this scheme is to support third level graduates to remain in Ireland for the purpose of seeking employment and applying for a Green Card or Work Permit.

Contact Us

International Office
E: international@cit.ie
T: +353 21 433 5300

Social media

[Facebook.com/citinternational](https://www.facebook.com/citinternational)
 @CIT_intl on Twitter
 @citinternational on Instagram
 CIT_Intl

POSTGRADUATE FEES

www.cit.ie/fees

Details of course fees are included with the course information in this handbook.

Students should note that the Fees quoted relate to the academic year 2019-2020 only and are subject to change on an annual basis.

Except where stated, course fees cover the cost of tuition only. Registration fees for professional bodies etc. are payable separately to these institutions.

Full-time (On Campus) EU Postgraduate Students will also be liable for the €7 USI Levy.

For further information on the USI levy please go to:

http://www.citsu.ie/_7-levy

Students will be notified of their fees by e-mail to their CIT e-mail account and in all cases, course fees must be paid before attending lectures.

Students can check their account balance and pay their fees online at www.cit.ie/pay

Failure to pay fees on time will result in a late payment fee of 10% being applied and students will no longer have access to IT Facilities.

- Where course fees are being funded by an employer, you are asked to seek payment or reimbursement from your employer. Where an employer requires an invoice in their Company name the employer must e-mail fees@cit.ie with the relevant details and the amount of Fees they will be funding.

- For Semesterised courses, students pay for the relevant modules at the beginning of each semester. Payment of fees by laser, debit or credit card can be made online at www.cit.ie/pay or by phoning +353 21 433 5440.

Students should familiarise themselves with the relevant section of the Student Regulations.

Please note that the Fees Office will use your CIT e-mail account for important communications.

Withdrawing from a course

Students who wish to withdraw from a course must notify the admissions office and complete a withdrawal form. Where Students fail to inform admissions of their withdrawal they will remain liable for any unpaid fees on their accounts. E-mail admissions@cit.ie

Refund Policy

All courses at CIT will run subject to sufficient student numbers. Where a course cannot proceed, applicants will be contacted and advised on alternative study options.

- A full refund will be given to all applicants for courses which do not proceed.
- A full refund will be given to students who withdraw before 5th September.
- Where students pay the online application fee to accept an offer they have 14 days in which to withdraw and claim a full refund provided the course has not commenced.

- A full refund (less 15% administration fee) will be given to applicants for short courses, if requested up to one week after course commencement. No refunds will be given thereafter. A short Course is less than 12 weeks duration.
- A full refund (less 15% administration fee) will be given to applicants for semesterised and full year courses if requested up to one month after the commencement of Semester 1 and before the end of February for Semester 2. No refunds will be given thereafter.
- All applications for refunds must be made on the appropriate Refund Form which can be requested from the CIT Fees Office (e-mail fees@cit.ie).

NB: Students are reminded to ensure that they have clearly understood all the terms of their enrolment with CIT, in particular clauses concerning refunds, deferments, waivers, course transfers, and visa applications (when applicable).

SUSI Grants

Full-time Postgraduate Students may be eligible for a SUSI Grant. To check your eligibility please go to:

<https://susi.ie/eligibility/postgraduate-student/>

Depending on the level of a student's reckonable income, they may qualify for either a Postgraduate Fee Contribution of €2,000 or a Postgraduate Fee Grant, up to a maximum of €6,270, towards the cost of their fees. In order to receive the maximum funding, students must meet the criteria for the **special rate of grant**.

Students should check the income thresholds and grant rates prior to submitting an application. Please note that if you were in receipt of a grant for your undergraduate degree the income limits are lower for Postgraduate Courses.

For the 2019/2020 academic year, your application will be assessed on **gross income** from all sources for the period 1st January 2018 to 31st December 2018.

<https://susi.ie/eligibility/postgraduate-student/postgraduate-income-thresholds-and-grant-award-rates/>

If you think you are eligible for the student grant, you should apply as soon as the grants scheme opens in April 2019. You do not need to know which course or college you will be attending in order to submit an application. **Only when your application has been completed in full and submitted to SUSI can your eligibility be determined.**

SUSI Support Desk

The SUSI Support desk is the single contact point for all e-mail and telephone queries. For opening times visit **www.susi.ie**.

- E-mail **support@susi.ie**
- Telephone **+353 76 108 7874**
- Facebook: Susi Support
Twitter: Susi Helpdesk

Tax Relief

Tax Relief on Tuition Fees - Third Level Education Courses must be at least 2 academic years duration for undergraduates and 1 year for postgraduate course. Tax relief is available for one course per individual in a tax year and is at the standard rate of tax.

<http://www.revenue.ie/en/tax/it/leaflets/it31.html>



SCHOOL OF GRADUATE STUDIES

CIT is committed to supporting and promoting all aspects of academic formation of postgraduate students through its constituent faculties, colleges, schools and Academic Units. Such aspects include the research project, taught modules, personal development plan, induction, progression and transfer.

Postgraduate research is carried out under the supervision and guidance of appropriately qualified members of academic staff of the Institute. A student may register at CIT for a research programme leading to awards at Level 9 (Masters) and Level 10 (Doctoral), including doctorates carried out partially or completely in the workplace. CIT provides opportunities for postgraduate study on both a full-time and a part-time basis for individuals with diverse academic, industrial and professional backgrounds.

The School of Graduate Studies (SGS) Office directs development of all aspects of postgraduate study within the Institute. The responsibilities of the SGS Office include coordinating together with academic and administrative processes relevant to postgraduates providing advice and support for both postgraduate students and research supervisors.

Why consider a Postgraduate Degree by Research?

Engaging in a postgraduate degree by research at CIT will provide you with cutting edge analytical skills, supported by the experience of working within a dynamic environment alongside national and international researchers. You will use leading edge techniques and equipment whilst being supervised to the highest level. We understand that your career is important to you, so during your time here as a research postgraduate you will be provided with a suite of supports, from supervision and mentoring to developing a personalised career development plan which will be integrated into your research. You will also have the opportunity to take taught modules which will not only enhance your research, but will make your future, wherever that may be, all the brighter. Our research teams often work closely with industry, so if you see your future career in industry then a research postgraduate qualification from CIT is something for you to seriously consider.

School of Graduate Studies Office

The School of Graduate Studies is located on the first floor of the Administration Centre in the CIT Bishopstown Campus.

Office Hours:

8.00am - 1.00pm

2.00pm - 4.00pm

Postgraduate Research Fees 2019/2020

The annual fee for EU Postgraduate Research students commencing in 2019/2020 is €5,500.

- The Fees are charged annually over 2 years for a Masters and 3 years for a PhD Full-time.
- Students who require additional time to complete their studies will be charged €750 per annum.
- For Non-EU Postgraduate Research fees please see page 13

Scholarships and Funding

There may be funding or scholarships available in your area, please contact the head of department for your chosen discipline area for further information

www.cit.ie/fees



POSTGRADUATE DEGREE BY RESEARCH

What types of Postgraduate Research can I apply for?

RESEARCH MASTERS

Learning outcomes at Level 9 (whether by research or otherwise) relate to the demonstration of knowledge and understanding which is at the forefront of a field of learning. The outcomes relate to the application of knowledge, understanding and problem solving abilities in new or unfamiliar contexts related to a field of study. The outcomes are associated with an ability to integrate knowledge, handle complexity and formulate judgements. Outcomes associated with Level 9 would link with employment as a senior professional or manager with responsibility for the work outputs of teams. Students for the Degree of Master by Research will be expected to acquire a mastery of the principles and theory underlying their chosen subject and a knowledge and appreciation of the relevant literature.

The CIT Master's degree will also include a structured taught element to provide the student with the skills and knowledge necessary for the pursuit of the proposed research. This will consist, at a minimum, of a 5 credit Core Research Skills module. Students may complete up to a maximum of 15 credits of approved learning in the form of relevant transferrable skills modules, discipline-specific modules, and work placement or other professional learning. This should be agreed beforehand with

the student's Graduate Supervisory Panel and be included in the student's Personal Development Plan.

Entry requirements

In order to qualify for entry to the Masters Register, an applicant is normally required to possess an Honours Bachelor Degree (Level 8) with a performance equivalent to at least a second class honours in a relevant field of study from a recognised degree-awarding institution.

Duration of Studies Leading to Master's Degree

The normal duration of studies leading to the Degree of Master by Research for full-time students is twenty-one months (two academic years) from the date of admission to the Masters Register. In exceptional circumstances, the Institute may vary the required and permitted duration of the programme.

Application Procedure

Step 1; Choose a programme;

CIT currently offers Masters by Research across all discipline areas within the Institute.

Step 2; Check entry

requirements; Students should confirm they are eligible to commence a research masters, if you have any queries please contact the SGS Office by e-mail graduate.school@cit.ie or phone 021 4355099.

Step 3; Find a supervisor;

Once students know which area or topic they wish to research, a compatible supervisor should be sought. Please contact the Head of Department for that discipline area who may be able to advise you regarding a potential supervisor. Your supervisor will help you prepare an outline proposal along with an application form to become registered as a student in CIT.

Step 4: Application; Completed application forms are returned to the SGS Office along with supporting documents such as transcript of results and outline proposal of your research. Once you are registered, the fees office will contact you about paying your appropriate fee.

DOCTOR OF PHILOSOPHY

Learning outcomes at Doctoral Level 10 relate to the discovery and development of new knowledge and skills through original research, or original application of existing knowledge, and the delivery of findings at the frontiers of knowledge and application that are of publishable standard in peer-reviewed literature or by equivalent peer review through performance or exhibition.

The Doctor of Philosophy (PhD) degree programme always involves the advancement of knowledge through original research, in which the student demonstrates outstanding scholarship and ability. It involves an individual programme of research leading to the submission of a doctoral thesis describing a coherent body of original work by the student. The thesis comprises a written dissertation, which may be accompanied by a portfolio or supporting artefacts, and is defended at an oral examination. Through it, the candidate must demonstrate that he/she has conducted original, independent research and has a broad knowledge of a particular field of study and a comprehensive knowledge of the specialist area upon which their research is focused.

All doctorates in CIT are structured with the following key characteristics:

(a) The core component of a structured PhD programme is the advancement of knowledge through original research; at the same time the structured PhD is designed to meet the needs of an employment market that is wider than academia;

(b) A high quality research experience, training and output consistent with international norms and best practice;

(c) To support the original research activity, the following elements are included:

- a formalised integrated programme of education, training and personal and professional development activities
- the development of discipline-specific knowledge, research skills and generic/transferable skills
- declared outcomes and graduate attributes in line with national and international best practice

Entry Requirements

Direct entry onto the Doctoral Register is permitted for applicants who possess an Honours Bachelor Degree (Level 8) with a performance equivalent to at least a second class upper division honours in a cognate area related to that of their proposed research from a recognised degree-awarding institution. Such applicants are required to complete a probationary period before their registration is confirmed.

Direct entry onto the Doctoral Register is also permitted for applicants who possess a Master's degree in a cognate area related to that of their proposed research from a recognised degree-awarding institution. Such applicants are required to complete a probationary period before their registration is confirmed.

Other applicants will normally be required to be entered on the Masters Register for at least one year full-time (or equivalent) before applying for transfer to the Doctoral Register.

Duration of Studies Leading to Doctoral Degree

The normal duration of studies leading to the Doctoral Degree for full-time students is four academic years from the date of admission

to the register. In exceptional circumstances, the Institute may vary the required and permitted duration of the programme.

Application Procedure

Step one: Choose a programme, CIT currently offers Doctor of Philosophy degrees in the following areas:

Business

- Management & Enterprise
- Marketing
- Organisational and Professional Development

Engineering

- Electrical & Electronic Engineering
- Mechanical, Manufacturing & Biomedical Engineering
- Process, Energy & Transport Engineering

Science

- Biological Sciences
- Computer Science
- Physical Sciences

Step two: Check entry

requirements Students should confirm they are eligible to commence a Doctoral Degree, if you have any queries please don't hesitate to contact the Graduate Studies Office.

Step Three: Find a supervisor

Once students know which area or topic they wish to research, a compatible supervisor should be sought. Please contact the Head of Department for that discipline areas who may be able to advise you regarding a potential supervisor. your supervisor will help you prepare an outline proposal along with an application form to become registered as a student in CIT.

Step 4: Completed Application

forms are returned to the School of Graduate Studies office along with supporting documents such as transcript of results and outline proposal of your research. Once you are registered the fees office will contact you about paying your appropriate fee.

The CIT Research Community

The main focus of CIT research is to engage in excellent research that has social and economic impact in the region and beyond, creating sustainable employment, attracting and nurturing new businesses and educating a talented pool of innovative researchers. CIT researchers work with a wide range of world class international collaborators in Europe, India, Russia, China, Brazil, and the USA.

CIT's research activities are structured to have a direct and meaningful impact on industry, whilst at the same time being grounded in research excellence. Research activity in CIT is organised around Thematic Research Areas which are large multi-disciplinary groups of researchers working on high-level research of strategic importance to the nation and smaller groups or individual researchers. As a CIT postgraduate researcher you will work within the Institute's Research and Innovation Ecosystem, designed to give you the experience that will drive your career in whatever direction you wish to take it.

The Thematic Research Areas are:

Information and Communications Technology research and innovation involving engineers and scientists from electronic engineering and computing takes place in the NIMBUS Research Centre and the SIGMA and RIOMH software groups. All work closely with industry. Activity in NIMBUS focuses on the Internet of Things (IoT). NIMBUS is CIT's largest research centre and Ireland's largest centre devoted to IoT research. SIGMA focuses on applying advanced software and

computational techniques to real world applications. RIOMH focuses on computing for cloud and distributed systems. For RIOMH contact donna.oshea@cit.ie.

For NIMBUS contact john.barrett@cit.ie and for SIGMA contact paul.walsh@cit.ie

Lifesciences and Wellbeing research includes the BioExplore Research Centre and the MEDIC group. BioExplore focuses on bio-analysis, diagnostics, antimicrobial screening, bioinformatics, peptide engineering and mass spectrometry. MEDIC focuses on the development of biomedical devices for the healthcare market. For BioExplore contact aidan.coffey@cit.ie and for MEDIC contact daithi.fallon@cit.ie

Photonics research includes the CAPP Research Centre which focuses on generating and harnessing light, impacting a wide range of areas, such as telecommunications, gas sensing, food and medical imaging. CAPP works closely with industry. The Astronomy and Instrumentation Group (AIG) develops and uses instruments for astronomy, some of which have been used for other applications such as trace contaminant detection and air quality monitoring. Nanomaterials and Analysis research covers topics such as in-situ and 3D electron microscopy, high-resolution lithography, nanowire doping and surface functionalisation with applications as on-chip bio-chemical sensors, high performance transistors and interconnects in microelectronics. For CAPP contact stephen.hegarty@cit.ie and for AIG contact niall.smith@cit.ie

Maritime Energy and Sustainable Environment Research Cluster (MESE)

research includes the Halpin Research and Innovation Centre, the Mechanical Systems Simulation and Optimisation (MeSSO) Group and the Sustainable Infrastructure Research and Innovation Group (SIRIG). Halpin focuses on maritime research from its base at the National Maritime College of Ireland, MeSSO focuses on optimising the performance and design of mechanical systems and SIRIG focuses on research related to sustainability with an emphasis on engineering infrastructure. For Halpin contact cormac.gebreurs@cit.ie, for MeSSO contact paul.osullivan@cit.ie and for SIRIG contact joe.harrington@cit.ie.

Exercise and Health research includes the Spraoi Research Group. Spraoi focuses on critical issues such as childhood obesity, childhood activity and its effects on health. Contact tara.coppinger@cit.ie or con.burns@cit.ie.

Creative and Performing Arts research is of increasing importance and is an area that will see significant growth in the coming years. It is conducted within the Crawford College of Art and Design (CCAD) and the Cork School of Music (CSM). For CCAD contact paul.green@cit.ie and for CSM contact maria.judge@cit.ie

Entrepreneurship, Competitiveness and Innovation research includes the Hincks Centre for Entrepreneurship Excellence and the V-Linc Group. Hincks focuses on research in enterprise and entrepreneurship development. The objective is to further our understanding of how entrepreneurship contributes to economic growth, competitiveness

and societal wellbeing. V-Linc focuses on research into clustering of companies and how this benefits their competitiveness. For Hincks contact helen.mcguirk@cit.ie and for V-Linc contact john.hobbs@cit.ie.

Education and Learning

research includes the Enterprise Engagement and Experiential Learning Group (E3LG) and the Educational Technology Group (EDTECH). E3LG focuses on engagement interactions between higher education institutions and external organisations, with

a particular focus on experiential learning. EDTECH focuses on pedagogically-orientated research into the application of new and emerging technologies to facilitate learning at all levels. For E3LG contact irene.sheridan@cit.ie and for EDTECH contact gearoid.osuilleabhain@cit.ie.

The table summarises the thematic areas and the types of research conducted within each and may be a useful guide. If your research interests are not covered within the Thematic Research Areas then you can always contact the School of Graduate Studies for advice and assistance - graduate.school@cit.ie

Thematic Research Areas	
Information and Communications Technology <ul style="list-style-type: none"> Internet of Things Cyberphysical systems Energy Water systems Industry Smart cities / People Behaviour / Assisted Living Machine Learning High Performance Computing 	Health and Exercise <ul style="list-style-type: none"> Childhood obesity and activity Health Sciences
Maritime, Energy and Sustainable Environment <ul style="list-style-type: none"> Maritime safety & security; shipping transport and logistics; education and training Energy retrofit Building management Micro-grid control Mechatronics Water & Wastewater Treatment Renewable Energy Sediment Behaviour & Management Structural Engineering Engineering Infrastructure 	Photonics <ul style="list-style-type: none"> Optics Semiconductor Lasers Spectroscopy Optical instrumentation Astronomy
Life Sciences and Wellbeing <ul style="list-style-type: none"> Molecular diagnostics Bio-therapeutics Bioinformatics Virology Gait analysis Biomedical Engineering / Biomedical Devices Analytical chemistry Toxicology 	Entrepreneurship, Competitiveness and Innovation <ul style="list-style-type: none"> Management Marketing Entrepreneurship Enterprise Support Accountancy
	Creative and Performing Arts <ul style="list-style-type: none"> Fine art Art therapy Multimedia Music Music technology
	Education & Learning <ul style="list-style-type: none"> E-learning and Educational Technology Workplace partnerships & Experiential learning

BUSINESS & HUMANITIES

MSc in Marketing Practice	21
MSc in International Business	22
MA in Global Business Practice	23
MSc in Digital Marketing Strategy	24
MA in Human Resource Management	25
Master of Business Administration (MBA) in Strategy	26
MA in Integrative Psychotherapy	27
MA in Play Therapy	28



Marketing Practice (M.Sc.)

CREDIT VALUE

M.Sc.: 90 ECTS

COURSE FEE

EU Applicants: €5,500
Non-EU Applicants: €12,000

APPLICATION

EU Applicants: Apply online at <https://www.cit.ie/course/CRBMRKP9>
Closing date: 1st September 2019
Non-EU Applicants: See page 10

FULL TIME

1 Year
(3 Semesters, September to August)

PART TIME

N/A

LOCATION

CIT Bishopstown Campus

Overview

The programme offers graduates a degree that will render them more employable by enhancing their ability to contribute to the real needs of the business community. The hybrid nature of the programme will turn Marketing Graduates into Marketing Practitioners with an array of action learning components; incorporating live assignments, specialised workshops, marketing strategy simulation and an industry-based marketing consultancy. There will also be a reflective journal completed throughout the year, detailing how and what the student has learned from the Masters experience.

This action learning based programme consists of a hybrid array of touch-points with business, facilitating learner engagement with a diverse range of marketing professionals. The programme also incorporates a suite of modules designed specifically to prepare the learner for careers in marketing practice.

The aim of this programme is to provide the learner with an advanced range of high level knowledge and skills in order to establish a more solid foundation for a successful career as a marketing professional.

Delivery

Full-time

No. of weeks per semester: 15

No. of timetable hours week:
Semester 1: circa 16 hours
Semesters 2 & 3: circa 35 hours

Which days: Monday to Friday

Duration: Three semesters

Admission Requirements

Applicants typically must have a minimum entry requirement of H2.2 in a cognate Level 8 Degree (including at least 20 credits in Marketing). Candidates will be shortlisted and will be required to attend an interview.

Subject to availability, late applications may also be considered.

Enquiries

Maurice Murphy
Department of Marketing and International Business
E: maurice.murphy@cit.ie
T: +353 21 433 5926

or

Conor Kelleher
Department of Marketing and International Business
E: conor.kelleher@cit.ie
T: +353 21 433 5925

Modules

All modules are worth 5 credits (ECTS) unless otherwise noted.

SEMESTER 1

Integrated Marketing Practice
The Digital Message
Strategic Marketing
Contemporary Marketing Issues
Relationship Management
Business Case Analysis

SEMESTER 2

Workplace Consultancy -
24 weeks spanning Semester 2 & 3
(40 ECTS)
Marketing Strategy Simulation
Online Business Effectiveness

SEMESTER 3

Workplace Consultancy -
24 weeks spanning Semester 2 & 3
(40 ECTS)
Reflective Learning Journal (10 ECTS)



International Business

(M.Sc.)

CREDIT VALUE

M.Sc.: 90 ECTS

COURSE FEE

EU Applicants: €5,500
Non-EU Applicants: €12,000

APPLICATION

EU Applicants: Apply online at
<https://www.cit.ie/course/CRBIBUS9>
<https://www.cit.ie/course/CRBINTB9>
for part-time applications

Closing date: 30th June 2019

Non-EU Applicants: See page 10

FULL TIME

1 Year
(3 Semesters, September to August)

PART TIME

2 Years
(4 Semesters)

The programme is designed specifically for non-business graduates and provides opportunities to develop business knowledge on top of your primary degree.

LOCATION

CIT Bishopstown Campus

Overview

This programme is geared at providing non-business graduates with the skills required to develop and promote products and services in an international environment while furthering their business skills and knowledge. Students build upon their own discipline (science, engineering, computing etc.) to develop solid understanding of Business Development, Internationalisation and Innovation in an interesting educational environment. Students will expand their business knowledge and skills through simulation, guest speakers, and an international trip. Students will also undertake an industry consultancy project which will prepare them for opportunities in the workplace. The programme is an excellent opportunity for students who want to complement their degree with business skills.

The MSc in International Business is aimed at graduates who wish to build on their previous **non-business** related degree and want to develop their skills for career advancement. It is open to graduates from non-business programmes who want to expand their horizon when it comes to their career. The programme should also appeal to those interested in increasing their business acumen with a view to capitalising on their existing skills sets.

Programme Highlights

The international Business Field Trip is an opportunity for immersion in non-Irish culture which serves to enhance and deepen the learning experience for students involved. The trip focuses on the skills required to develop business opportunities in new markets.

The **Seminar Series** module allows students the opportunity to draw upon their learning throughout the programme and to synthesise that in the context of some direct exposure to industry leaders.

The **Applied Business Consultancy Project** is a capstone module which brings together the learning from the programme which is applied to a business-set project.

Delivery

Full-Time

No of weeks per semester: 13

No of timetabled hours per week:

Semester 1 (12 Hours)

Semester 2 (12 Hours)

Semester 3 (mainly independent learning)

Some weeks will contain extra sessions to support independent learning.

Which days: Monday to Friday

Duration: 3 semesters

Admission Requirements

- H2.2 in an Honours Degree in a non-cognate area. All areas where the specialism is not business, Marketing, Accounting/Finance or Business Information Systems will be considered
- Personal Statement must be provided by the applicant
- An interview may be held with certain candidates
- An IELTS of 6.5 (or equivalent) will be requested of non-EU applicants where deemed appropriate by the Head of Department

Enquiries

Dr Anne-Marie Ivers
Department of Marketing and International Business
E: annemarie.ivers@cit.ie
T: +353 21 433 5898

Modules

All modules are worth 5 credits (ECTS) unless otherwise noted.

SEMESTER 1

Strategic Thinking
Global Marketing Management
International Selling & Business Development (10 ECTS)
Innovation Management & Creativity
Financial Management & Systems

SEMESTER 2

International Bus Field Trip
Sustainable Marketing Practice
Seminar Series (International)
Economics of Global Markets
Elective
Customer Experience Design
Tech Mgt in Global Business
People Management Strategies
Digital Environment

SEMESTER 3

Business Environment Simulation (10 ECTS)
Applied Consultancy Project (20 ECTS)

PLEASE NOTE THAT PART-TIME DELIVERY IS OFFERED OVER 4 SEMESTERS



Global Business Practice

(M.A.)

CREDIT VALUE

M.A.: 90 ECTS

FULL TIME

3 semesters

COURSE FEE

EU Applicants: €5,500
Non-EU Applicants: €12,000

PART TIME

N/A

APPLICATION

EU Applicants: Apply Online
<https://www.cit.ie/course/CRBGLBP9>
Closing date: 30th June 2019
Non-EU Applicants: See page 10

LOCATION

CIT Bishopstown Campus

Overview

The MA in Global Business Practice is a new programme offered by CIT which emphasises the development of skills relating to International Business with a capstone international placement. The programme is aimed at those with existing business degrees and develops knowledge & Insight relating to areas that are of particular importance for businesses operating globally. This can include small, medium and large companies who may be involved in the movement and development of goods, service or labour across multiple territories. Skills and knowledge developed relate to operations management, supply chain and logistics, procurement as well as broader themes like strategy and innovation which also underpin success in global business.

The programme has three strands, geared at developing a graduate that will be ready to gain employment in roles where international business skills and knowledge can be put to immediate and practical usage.

Traditional Platform (Semester 1 – September to January)

This focuses on the global environment putting specific focus on contemporary issues in the international landscape. The provision of these modules that act as critical immersions in areas including Global Competitive Strategies, Financial Interpretation, Business Relationship Development, International Business Negotiation, Innovation Management & Creativity and Operations Strategy will be through a delivery mode that emphasises traditional delivery albeit through interesting pedagogical approaches.

Accelerated and Intensive Platform (Semester 2 January to March)

During January, February and March learners will have the opportunity to undertake specifically tailored modules that will be delivered in either intensive or accelerated modes.

Placement (April to August)

The final stage of the programme will provide students with the opportunity to apply their knowledge and skills to real world initiatives through placement in an international business or a business with a strong business orientation. This will be of significant duration and will be targeted at overseas partners though suitable placements may also be approved within Ireland.

Admissions Requirements

This programme is geared at business students. As students will emanate from various business areas the following entry criteria normally need to be met:

1. A H2.2 (or equivalent) in an Honours Degree in a business area.
2. A Personal Statement must be provided by the applicant.
3. An interview may be held with candidates.
4. An IELTS of 6.5 (or equivalent) will be requested of students where deemed appropriate by the HOD.

Career Opportunities

It is envisaged that graduates will play significant roles in the various aspects of the export orientation of Irish and multinational businesses. This will be supported by an understanding of pertinent business knowledge relating to this area with in-depth understanding of areas such as trade policy, negotiation, financial interpretation and operations and logistics. There is an articulated demand within Irish businesses for graduates, who understand what it

means to be truly global, who also have the skills and knowledge required to play an active part in an ever more competitive business environment.

We expect that graduates of this programme would be suited to graduate programmes of large multinationals and that beyond this the graduates would be ready for roles (within large and small companies) including indigenous Irish companies.

Modules

STAGE 1/SEMESTER 1 (TRADITIONAL DELIVERY)

Global Competitive Strategies (5 Credits)
Operations Strategy (5 Credits)
Business Relationship Management (5 Credits)
International Business Negotiation (5 Credits)
Financial Interpretation (5 Credits)
Innovation Practice (5 Credits)

STAGE 1/SEMESTER 2 (INTENSIVE OR ACCELERATED)

Purchasing and Logistics (5 Credits)
International Study Trip (5 Credits)
Business Simulation (10 Credits)
Trade Regulation & Policy (5 Credits)
Seminar Series (5 Credits)

SEMESTER 3

Placement (30 Credits)

Enquiries

Dr Claudia Wagner
Department of Marketing and International Business
E: claudia.wagner@cit.ie
T: +353 21 433 5894



Digital Marketing Strategy

(M.Sc.)

CREDIT VALUE

MSc.: 90 ECTS

FULL TIME

N/A

COURSE FEE

EU Applicants: €7,500 payable over 2 years
Non-EU Applicants: €12,000

PART TIME

This programme is offered in online and on-campus part time mode

APPLICATION

EU Applicants: Apply Online
<https://www.cit.ie/course/CRBDMAS9>
Closing date: 30th June 2019
Non-EU Applicants: See page 10

Overview

Digital Marketing allows companies to connect with and understand their customers in the newest and most exciting of ways. It can be thought of as a set of strategies and tools that, due to their reach and measurability, offers a vibrant complement to traditional marketing.

Over the last few years, more and more companies have shifted their Marketing Budgets towards Digital Marketing. With this trend set to continue, and an ever-widening set of tools available, CIT has launched an innovative Masters in Digital Marketing Strategy programme.

CIT has developed a strong track record in providing short Digital Marketing programmes over the last few years and have found the level of expertise and insight developed through such programmes to be unparalleled.

Structure

The Masters in Digital Marketing Strategy is a part-time, two year Level 9 course (90 ECTS) aimed at those working in traditional and digital marketing or those aspiring towards a senior position that require a solid foundation in multiple aspects of Digital Marketing.

This part-time course is offered in both online and face-to-face mode. In face-to-face mode the course is delivered on campus on Saturday's and weekday evenings. In online mode the course is delivered entirely at a distance using a range of synchronous and asynchronous tools (for more on CIT's model of online delivery please see <http://tel.cit.ie/how-does-it-work>).

All assessment for both modes is by project work, reports and similar mechanisms; there are no final terminal exams.

Indicative face-to-face timetable

Semester 1: 4 Saturdays and 15 Tuesday evenings (Semester 1 comprises the Certificate in Digital Marketing)

Semester 2: 6 Saturdays and 15 Wednesday evenings

Semester 3: 6 Saturdays and 15 Wednesday evenings

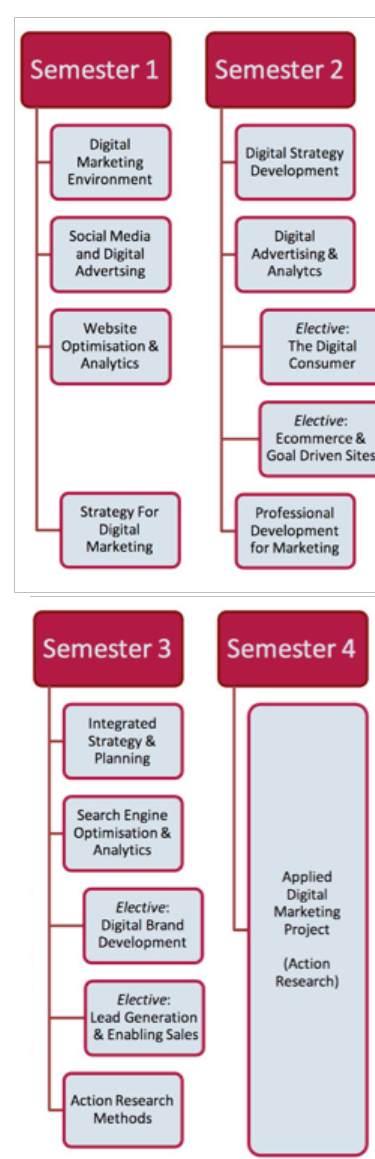
Semester 4: Independent Research activity with Supervision support from CIT

Admission requirements

1. Candidates ideally should have attained at least a H2.2 degree in a cognate area (an area related to business, media or visual communications).
2. Degree-holders from non-cognate areas will be considered provided that these candidates can demonstrate significant relevant industrial experience.

Enquiries

Vivienne Griffin
 E: vivienne.griffin@cit.ie
 T: 021 4326120





Human Resource Management (M.A.)

CREDIT VALUE

M.A.: 90 ECTS

FULL TIME

1 Year

COURSE FEE

EU Applicants Full Time: €5,500
EU Applicants Part Time: €5,900
Non-EU Applicants: €12,000

PART TIME

2 Years
(4 Semesters, September to May)

APPLICATION

EU Applicants: Apply online at <https://www.cit.ie/course/CRBHRMN9>
Closing date: 9th September 2019
Non-EU Applicants: See page 10

LOCATION

CIT Bishopstown Campus

Overview

This programme allows graduates to apply for advanced level membership of Chartered Institute of Personnel and Development, CIPD, and will aid them as their career progresses to strategic roles in organisations.

The programme is designed to expose students to current issues in the Human Resource Management domain at a strategic level. This Masters programme has been designed in consultation with industry to respond to changes that have taken place in the HR area. It is aimed at professionals in the Human Resource discipline who wish to further their career and enhance their skillset.

Delivery

Part-time

No. of weeks per semester: 15

No. of timetable hours week: 8

Which days: Mondays & Wednesdays (evenings) with occasional Saturdays

Duration: Four semesters

Full-time

Two taught semesters plus dissertation completion

18 hours per week

Admission Requirements

Applications are assessed on a first come first served basis.

Bachelor of Arts (Honours) in Human Resource Management (Level 8) at grade H2.2 or higher. Graduates of cognate Honours programmes who have attained HR experience may also be eligible. The programme is offered on a modular basis and requires learners to attain 90 credits.

Enquiries

Dr Deirdre O'Donovan
Department of Organisation and Professional Development
E: deirdre.odonovan@cit.ie
T: +353 21 433 5907

Modules

All modules are worth 5 credits (ECTS) unless otherwise noted.

SEMESTER 1

International Corporate Strategy
Professional Employment Law
HRM in Context
Coaching and Mentoring (4 Saturdays)

SEMESTER 2

Applied Corporate Strategy
Employee Engagement
Leading, Managing & Developing People
Training, Talent & Knowledge Management

SEMESTER 3

Research Methods
Reward & Incentive Management
Performance Management
Sourcing & Testing

SEMESTER 4

Research Dissertation (30 ECTS)

Master of Business Administration (MBA) in Strategy

CREDIT VALUE

MBA: 90 ECTS

COURSE FEE

EU Applicants: €12,500

APPLICATION

Apply online at
<https://www.cit.ie/course/CRBSTRA9>
 Closing date: 31st August 2019

FULL TIME

N/A

PART TIME

2 Years
 (4 Semesters, September to September)

LOCATION

CIT Bishopstown Campus

How will I benefit?

Individual professional and personal development.

The MBA programme will allow you to develop your interpersonal, conceptual and decision making skills which will give you enhanced management and leadership ability, confidence and critical self-awareness.

The MBA will give you the required skills and abilities to assist you in navigating your chosen career path.

Your organisation will benefit from you acquiring new skills and confidence and will bring an added value to your workplace and colleagues.

Overview

The aim of the MBA in Strategy is to enable learners to develop their leadership and strategic management skills, thus raising their individual performance and assisting their organisations achieve success.

The MBA enables the learner, as a professional, to review their leadership and management style and identify how they can improve upon same to increase their effectiveness at a senior level in the workplace. The programme allows learners to develop an appreciation of the interconnectedness of all aspects of the organisation, and an appreciation of the role each function must play in delivering on organisational goals.

For most learners, moving to a strategic role in their organisation requires an understanding of functions outside of their existing professional competence together with an expert command of strategic management and thinking.

Delivery

Part-time

No. of weeks per semester: 15

No. of timetable hours week: 10

Which days:
 Wednesdays: 6pm - 10pm
 Fridays: 3.00pm - 9.00pm

Duration: Four semesters

Admission Requirements

Applications are assessed on a first come first served basis.

Applicants who have a minimum of an Honours Bachelor of Business or cognate degree (Level 8) or cognate discipline (H2.2) or an approved equivalent qualification are eligible to apply for entry to the programme.

Subject to availability, late applications may also be considered.

Enquiries

John Meyler
 Department of Organisation and Professional Development
 E: john.meyler@cit.ie
 T: +353 21 433 5335

Modules

All modules are worth 5 credits (ECTS) unless otherwise noted.

SEMESTER 1

Research Methods
 Exploring Corporate Strategy (10 ECTS)
 Applied Business Finance
 Leadership & Organisational Behaviour

SEMESTER 2

Economics of Global Markets
 Global Business Strategy (10 ECTS)
 Contemporary Issues in Marketing
 IT & Analytics for Business

SEMESTER 3

International Business Trip (Mandatory)

Electives – Choose 1

Operations Strategy (Elective)
 Innovation & Creativity (Elective)
 Organisational Change Management (Elective)
 Strategic Corporate Finance (Elective)
 Services Marketing Management (Elective)

SEMESTER 4

Research Dissertation (30 ECTS)

Integrative Psychotherapy (M.A.)

CREDIT VALUE

M.A.: 90 ECTS

COURSE FEE

Course Fee: Year 1 €3,500
Course Fee: Year 2 €1,200 for
Dissertation and Mental Health Placement

APPLICATION

For details visit
<https://www.cit.ie/course/CRHINTP9>
Closing date: 3rd May 2019

FULL TIME

N/A

PART TIME

See below

LOCATION

CIT Bishopstown Campus

This programme is run over a two year cycle (next intake is September 2019).

Accreditation

The process of establishing training standards to prepare for the statutory registration of Psychotherapists in Ireland is continuing.

The present overall training programme at CIT combining the Bachelor of Arts (Honours) in Counselling and Psychotherapy, two years post-qualifying supervised clinical practice and the MA in Integrative Psychotherapy, represents the best interpretation of the requirements as they currently prevail.

Overview

The programme aims to equip practitioners with the advanced knowledge and clinical capability of best practice within the Psychotherapy profession.

Client work and supervision:

Students will be required to carry out 100 hours of Counselling work with clients during each year of the course. They will be required to obtain supervision for this work from their own Supervisor. Additionally, during Year 1 they will participate in monthly group supervision arranged by the course. Payment for individual and group supervision will be made directly by students and is not included in the course fee.

Personal Therapy:

Students will be in weekly personal therapy throughout the course. The cost of this is separate to the course and is arranged directly between the student and the therapist.

Delivery

The programme has 90 credits and will be offered as follows:

Year 1 (60 Credits) is a taught year where students will attend at College and supervision, thus completing the taught modules of the course. The regular sessions will be held on a combination of weekday evenings (generally 6.30pm to 9.30pm) and on Saturdays and Sundays.

Year 2 (30 Credits) will involve a programme of directed/supervised learning where students will research and write the Reflective Practitioning dissertation. During this year they will also carry out their Mental Health Placement.

Admission Requirements

Applicants must

- Have successfully completed the Bachelor of Art (Honours) in Counselling or Psychotherapy (minimum H2.2) or an equivalent* professional training in Counselling and Psychotherapy that satisfies the training requirements for professional accreditation.
- Have completed two years post-qualifying supervised clinical practice with a minimum of 150 hours of clinical practice which is verified by an accredited supervisor.
- Be assessed through interview.
- Submit two written references (for applicants who have not already been on a prior stage of the course).

*Where an applicant has not completed the Bachelor of Arts (Honours) in Counselling or Psychotherapy, equivalence is assessed through the formal Recognition of Prior Learning (RPL) process used in Cork Institute of Technology. This involves applicants preparing a portfolio in which they would demonstrate how they have achieved

the learning outcome of the modules in the BA (Honours) in Counselling and Psychotherapy as well as the two years post-qualifying supervised clinical practice.

N.B. All applicants who enrol in the MA in Integrative Psychotherapy will be required to undergo Garda vetting.

Modules

All modules are worth 5 credits (ECTS) unless otherwise noted.

SEMESTER 1

Developmental Theory & Adult Adaptations
Clinical Assessment & Case Formulation
Personal & Relational Process
Supervised Psychotherapy Practice

SEMESTER 2

Trauma, Dissociation and their treatment
Clinical Process of Psychotherapy
Personal and Clinical Integration
Practitioner Research Methods

SEMESTER 3

Mental Health Placement
Reflective Practitioning Dissertation (25 ECTS)

Enquiries

Helen Moylan
E: helen.moylan@cit.ie

Play Therapy

(M.A.)

CREDIT VALUE

M.A.: 90 ECTS; P.Grad.Dip.: 60 ECTS

FULL TIME

N/A

COURSE FEE

EU Applicants: €6,900 (€2,300 per annum) Clinical Supervision (from approved supervisors), personal therapy and playroom materials are additional.

PART TIME

3 Years

APPLICATION

For details visit <https://www.cit.ie/course/CRHPLTH9>
Please note that the next intake for this programme will be September 2020.

LOCATION

CIT Bishopstown Campus

Overview

This programme is a postgraduate clinical training in Play Therapy. It aims to equip practitioners with the advanced knowledge and clinical capability that would match international standards of best practice within the Play Therapy profession.

Key areas:

- Personal therapy and personal development

On successful completion of the programme students may be eligible for membership of the Irish representative organizations for Play Therapists. These include the Irish Play Therapy Association, the Irish Association for Play Therapy and Psychotherapy, and Play Therapy Ireland.

Please note that the next intake for this programme will be September 2020.

Delivery

Part-time

No. of weeks: 26 per annum

Duration: Three years

This course is run on Saturdays but an additional half day weekly is required for placement (this must be during Social Work office hours to facilitate child protection reporting). Students may be required to attend for block residential weekends (Friday, Saturday, Sunday).

Years 1 and 2 (60 credits) will include a clinical training in Play Therapy. Students will study modules which will be experiential and theoretical. They will undertake placements in both years and will require external supervision from approved supervisors.

On successful completion of the taught elements, students will be awarded a Postgraduate Diploma in Play Therapy, unless they proceed to Year 3.

Year 3 (30 credits) The MA in Play Therapy is awarded to successful candidates who complete a module in research skills and a dissertation.

Admission Requirements

Applicants must hold a Level 8 Honours degree (H2.2) or higher, in one of the following areas: Counselling/ Psychotherapy, Early Years Education, Occupational Therapy, Primary Education, Psychiatry, Psychology, Psychiatric Nursing, Social Care, Social Work, Special Needs Education or a cognate discipline.

Applicants must be 23 years old at the time of entry to the programme and have at least two years post qualifying experience of working with children. Applicants will be required to attend an interview.

Applicants must include a personal statement, detailing why they are choosing this career.

Modules

All modules are worth 5 credits (ECTS) unless otherwise noted.

SEMESTER 1 (YEAR 1)

Clinical Work Preparation
Child Development & Play
Play Therapy Theory
Application of Play Therapy Skills
Observation Techniques
Clinical Work Practice

SEMESTER 2 (YEAR 2)

Neuroscience
Group and Family Play Therapy
Play Therapy Processes
Play Therapy Underpinnings
Play Therapy Work Practice
Sand and Art Therapy

SEMESTER 3 (YEAR 3)

Play Therapy Research Methods (10 ECTS)
Research Dissertation (20 ECTS)

N.B. All applicants who enrol on this programme will be required to undergo Garda vetting.

Enquiries

Karen O'Connor
E: karen.oconnor@cit.ie
T: 021-4336155

ENGINEERING

MEng in Civil Engineering (Environment and Energy)	30
MEng in Structural Engineering	31
MEng in Chemical & Biopharmaceutical Engineering	32
MSc in Construction Project Management	33
MEng in Embedded Systems Engineering	34
M.Arch (Architecture)	35



Civil Engineering (Environment and Energy) (M.Eng.)

CREDIT VALUE

M.Eng.: 90 ECTS;
P.Grad.Dip.: 60 ECTS

FULL TIME

For information, please visit
www.cit.ie/cse

COURSE FEE

Full time: EU Applicants €5,000
Part Time: EU Applicants €7,000
Non-EU Applicants: €12,000

PART TIME

Typically 2 Years (5 Semesters)

APPLICATION

EU Applicants: Apply online at
<https://www.cit.ie/course/CRCENEN9>
Closing date: 30th June 2019
Non-EU Applicants: See page 10

LOCATION

CIT Bishopstown Campus

Overview

This programme aims to develop advanced analytical, design, assessment, appraisal and research skills in Civil Engineering in the specialist areas of environmental and energy engineering. Graduates will be well equipped to meet the challenges of the modern Civil Engineering based environmental and energy engineering industries, providing, protecting and enhancing the natural environment and the related physical infrastructure that underpins society; in this context a broad range of environmental and energy engineering topics are addressed from the local level to the global scale. The programme content seeks to reflect current and likely future practice and trends in environmental and energy engineering analysis, design, and assessment.

The programme of study is designed to progress your qualifications in the following ways:

- Deepen your technical knowledge, skills and competences in the specialised field of Environmental and Energy Engineering;
- Develop your ability to carry out in depth research in a chosen field of Engineering, to draw conclusions from the research and present research findings;
- Broaden your knowledge in other areas such as Sustainability, Asset and Project Management.

The programme is fully accredited by Engineers Ireland as satisfying the new educational standard for the title Chartered Engineer.

Delivery

Full-time

For information, please visit
www.cit.ie/cse

No. of weeks per semester: 17

No. of timetable hours week: circa. 16 hours per week

Which days:

Full-time: Monday to Friday

Part-time: 1 evening per week and a Friday afternoon

Duration: Three semesters

Students who are available to attend part-time by day may take modules on a phased basis and achieve the programme qualification over a number of academic years, typically 2 years.

Admission Requirements

Applicants should hold a minimum of a Second Class Honours Grade 2 in a professionally accredited Level 8 Honours Degree Programme in Civil Engineering or a cognate discipline.

Equivalent recognition may be given through the Recognition of Prior Learning (RPL) process on an individual case-by-case basis to candidates who have not achieved this academic standard but who can demonstrate significant relevant professional experience in the discipline of Civil, Environmental or Energy Engineering (www.cit.ie/rpl).

Enquiries

Leonard O'Driscoll
Department of Civil, Structural & Environmental Engineering
E: leonard.odriscoll@cit.ie
T: +353 21 432 6563

Modules

All modules are worth 5 credits (ECTS) unless otherwise noted.

The elective modules afford the learner the opportunity to broaden his/her skills set in other disciplines or to deepen his/her skills set in environmental and energy engineering. The elective modules offered in any given year are delivered subject to demand and resource availability.

SEMESTER 1

Sustainability in Engineering
Energy Source Analysis
Advanced Hydro & Flood Control
Engineering Research Skills
Ocean Energy Conversion

Elective

Advanced Geotechnical Engineering
Computational Solid Modelling
Contract Admin/Dispute Resolve
Strategic Business Management

SEMESTER 2

Environmental and Energy Engineering Infrastructure
Biofuel and Biomass Technology
Project Development
Advanced Wastewater Engineering Design

Advanced Water Engineering

Elective

Infrastructure Asset Management
Engineering Project Management
Environmental Management
Managing Innovation
Leadership & Change Management
Computational Fluid Dynamics

SEMESTER 3

Project Realisation (30 ECTS)



Structural Engineering (M.Eng.)

CREDIT VALUE

M.Eng.: 90 ECTS

FULL TIME

For information, please visit
www.cit.ie/cse

COURSE FEE

Full-time: EU Applicants €5,000
Part Time: EU Applicants €7,000
Non-EU Applicants: €12,000

PART TIME

Typically 2 Years (5 Semesters)

APPLICATION

EU Applicants: Apply online at
<https://www.cit.ie/course/CRCSTRU9>
Closing date: 30th June 2019
Non-EU Applicants: See page 10

LOCATION

CIT Bishopstown Campus

Overview

The programme involves a variety of delivery modes, including classroom based lectures, individual and group project work, tutorials, seminars and presentations by visiting experts. A Research Dissertation is completed by each student during Semester 3.

The programme of study is designed to progress your qualifications in the following ways:

- Deepen your technical knowledge, skills and competences in the specialised field of Structural Engineering
- Prepare you to undertake the Institution of Structural Engineers Professional Practice Examinations by developing your structural analysis and design skills to an appropriate level
- Extend your educational qualifications to a level required for Chartered Engineer status
- Develop your ability to carry out in depth research in a chosen field of Engineering, to draw conclusions from the research and present research findings
- Broaden your knowledge in other areas such as Sustainability, Management, and Business

The programme is fully accredited by Engineers Ireland as satisfying the new educational standard for the title Chartered Engineer.

Delivery

For information, please visit www.cit.ie/cse

No. of weeks per semester: 17

No. of timetable hours week: circa. 16 hours per week

Which days:

Full-time: Monday to Friday

Part-time: 1 evening per week and a Friday afternoon

Duration: Three semesters

Students who are available to attend part-time by day may take modules on a phased basis and achieve the programme qualification over a number of academic years, typically 2 years.

Admission Requirements

Applicants should hold a minimum of a Second Class Honours Grade 2 in a professionally accredited Level 8 Honours Degree Programme in Civil or Structural Engineering.

Equivalent recognition may be given through the Recognition of Prior Learning (RPL) process on an individual case-by-case basis to candidates who have not achieved this academic standard but who can demonstrate significant relevant professional experience in the discipline of Structural Engineering (www.cit.ie/rpl).

Enquiries

John Justin Murphy
Department of Civil, Structural & Environmental Engineering
E: johnjustin.murphy@cit.ie
T: +353 21 432 6741

Modules

All modules are worth 5 credits (ECTS) unless otherwise noted.

The elective modules afford the learner the opportunity to broaden his/her skills set in other disciplines or to deepen his/her skills set in structural engineering. The elective modules offered in any given year are delivered subject to demand and resource availability.

SEMESTER 1

Advanced Structural Design Office (10 ECTS)
Advanced Geotechnical Engineering
Computational Solid Modelling
Engineering Research Skills
Sustainability in Engineering

SEMESTER 2

Structural Engineering
Bridge Engineering
Infrastructure/Special Structures
Project Development

ELECTIVE

Fire Safety Engineering
Eng. Project Management
Infrastructure Asset Management
Prestressed Concrete
Advanced Hydro & Flood Control
Advanced Water Engineering
Advanced Wastewater Eng. Design
Computational Fluid Dynamics
Strategic Business Management
Managing Innovation
Leadership & Change Management

SEMESTER 3

Project Realisation (30 ECTS)



Chemical & Biopharmaceutical Engineering (M.Eng.)

CREDIT VALUE

M.Eng.: 90 ECTS

FULL TIME

1 Year (3 Semesters, September to August)

COURSE FEE

Full-time: EU Applicants €5,000
Part Time: EU Applicants €7,000
Non-EU Applicants: €12,000

PART TIME

3 Years (9 Semesters, September to August)

APPLICATION

EU Applicants: Apply online at <https://www.cit.ie/course/CRECHBI9>
Closing date: 31st May 2019
Non-EU Applicants: See page 10

LOCATION

CIT Bishopstown Campus

Overview

This programme aims to develop advanced analytical, design and research skills in Chemical Engineering with an industrial focus. Postgraduate students will undertake the final research element of this Masters programme in a host company or with their current employer. This will provide the researcher with an insight into the commercial aspects of engineering research and innovation and the opportunity to contribute to the development of the latest products and techniques.

Graduates of the programme will be well equipped to respond to the needs of the high technology industries particularly those with a focus on Research & Development, and product or process innovation.

Delivery

Full-time

No. of weeks per semester: 13
No. of timetable hours week: 15
Which days: Variable
(usually includes Friday afternoon)
Duration: Three semesters

Admission Requirements

Applicants must have achieved a minimum of Second Class Honours in a Level 8 Honours Bachelor Programme in Chemical and Biopharmaceutical Engineering or equivalent.

Enquiries

Dr. Róisín Foley
Department of Process, Energy and Transport Engineering,
E. roisin.foley@cit.ie
T: +353 21 4326224

Modules

All modules are worth 5 credits (ECTS) unless otherwise noted.

The elective modules afford the learner the opportunity to broaden his/her skills set in other disciplines or to deepen his/her skills set in a selected area or focus. The elective modules offered in any given year are delivered subject to demand and resource availability.

SEMESTER 1

Emerging Technologies
Engineering Research Skills
Environment, Health & Safety
Lean Sigma - Advanced Stats
Industrial Heat and Power

Elective

Sustainability in Engineering
Strategic Business Management

SEMESTER 2

Computational Fluid Dynamics
Process Technology Transfer
Industrial Control Systems
Research Project Preparation (10 ECTS)

Elective

Eng. Project Management
Environmental Management
Managing Innovation

SEMESTER 3

Project Realisation (30 ECTS)



Construction Project Management (M.Sc.)

CREDIT VALUE

M.Sc.: 90 ECTS

COURSE FEE

EU Applicants: €5,000
Non-EU Applicants €12,000

APPLICATION

EU Applicants: Apply online at <https://www.cit.ie/course/CRCCOPM9>
Closing date: 19th August 2019
Non-EU Applicants: See page 10

FULL TIME

1 Year (3 Semesters, September to August)

PART TIME

2 Years

LOCATION

CIT Bishopstown Campus

Overview

A unique programme, developed following Industry demand and Government calls for upskilling, which will provide students with advanced managerial skills in Construction Project Management.

Graduates will be equipped to meet the challenges of managing the design and construction of modern complex developments in a diverse business environment.

The comprehensive module range offers the student extensive choice, facilitating individual areas of expertise.

The learning experience involves a variety of modes, including classroom based lectures, individual and group project work, tutorials, seminars and presentations by visiting experts. A research dissertation is completed by each student during Semester 3.

Students may take modules on a phased basis and achieve the programme qualification over a number of academic years.

Career Opportunities

The programme has been designed to suit the distinctive needs of the construction industry and offers excellent career opportunities for graduates as project managers or contract managers with design and construction companies, project management consultants and government agencies.

Delivery

Full-time

No. of weeks per semester: 13

No. of timetable hours week: 14 - 18

Which days: Variable

Duration: Three semesters

Admission Requirements

Applicants must have successfully completed a Level 8 Built Environment Programme or equivalent* with a minimum Second Class Honours Grade 2.

*Equivalence: Where an applicant has not completed a relevant Level 8 programme equivalence is assessed through the formal Recognition of Prior Learning (RPL) process used in Cork Institute of Technology (www.cit.ie/rpl).

Enquiries

Colin Donoghue
Department of Construction
E: cpmenquiries@cit.ie
T: +353 21 433 5412

Modules

All modules are worth 5 credits (ECTS) unless otherwise noted.

SEMESTER 1

Contract Administration/Dispute Resolve
Sustainability in Engineering
Research Skills and Practice
Const. Project Management
Org Management & Knowledge Management

Electives – Choose 1

Corporate Construction Finance
Mechanical & Electrical Services
Cost Planning
Strategic Construction
Development Appraisal
Advanced Measurement
Entrepreneurship
New Venture Management & Growth
Strategic Business Management

SEMESTER 2

Eng. Project Management
Global Project Management
Research Project Development
Construction Value & Risk Management

Electives – Choose 2

M&E Measurement
Site Management and Technology
Construction Psychology
Construction Project Controls
Commercial Management
Infrastructure Asset Management
Adaptation and Reuse 2
Environmental Management
Intl Strategies & Organisation
Leadership & Change Management
Managing Innovation

SEMESTER 3

Research Project Realisation
(30 ECTS)



Embedded Systems Engineering (M.Eng.)

CREDIT VALUE

M.Eng.: 90 ECTS; P.Grad.Dip.: 60 ECTS

COURSE FEE

EU Applicants: €5,500
Non-EU Applicants: €12,000

APPLICATION

EU Applicants: Apply online at <https://www.cit.ie/course/CREMBED9>
Closing date: June 2019
Non-EU Applicants: See page 10

FULL TIME

1 Year (3 Semesters, September to September)

PART TIME

Can register for 1 or more available modules per semester

LOCATION

CIT Bishopstown Campus

Overview

This programme will prepare students for a career in the rapidly growing embedded systems industry or in embedded systems research. With a strong emphasis on project based learning, the course will deliver practical skills in embedded system design and development in addition to associated underlying principles.

The programme aims to provide an opportunity for further development for Level 8 qualification holders who want to specialise in the area of Embedded Systems, i.e. sensor hardware, microprocessor systems, high level programming, network concepts, physical embedding, digital hardware design, middleware and wired/wireless communications.

The programme will satisfy the needs of industry at embedded systems level for Level 9 electronic engineering personnel.

Shared Delivery between full-time and part-time students.

Module delivery is shared between full and part-time students. On accumulating 90 credits through part-time or full-time learning the learner is eligible for the MEng in Embedded Systems Engineering. There are exit awards at Certificate level (30 credits) and Postgraduate Diploma level (60 credits).

Delivery

Full-time

No. of weeks per semester: 13

No. of timetable hours week: 18

Which days: Variable (daytime/evening)

Duration: Three semesters

This course is offered under a credit based structure. It consists of 3 terms over a calendar year, Sept - Sept.

Terms 1 and 2 are 30 credits each and consist mostly of taught elements;

Term 3 involves a 30-credit project to take place in industry or in a Department research group

Admission Requirements

Applicants are required to have an Honours Degree in Engineering in Electronic Engineering (Level 8) or equivalent or cognate discipline equivalent at merit or distinction level.

Enquiries

Fergus O'Reilly
Department of Electrical & Electronic Engineering
E: fergus.oreilly@cit.ie
T: +353 21 433 5465

Modules

All modules are worth 5 credits (ECTS) unless otherwise noted.

The elective modules afford the learner the opportunity to deepen his/her skills set in a selected area or focus. The elective modules offered are delivered subject to demand and resource availability.

SEMESTER 1

Transferable Research Skills
Wireless Sensor Nodes
Team Project: Design
Embedded Software Design
Embedded Software for Networks
Networking Embedded Systems

SEMESTER 2

Managing Innovation
Team Project: Implementation (10 ECTS)

Elective (Choose 3)

Embedded Networking Technology
Distributed Embedded Software
Embedded Hardware Design
Physical Layer Design

SEMESTER 3

Embedded Systems Project (30 ECTS)



Architecture (M.Arch.)

(Joint programme with UCC)

CREDIT VALUE

M.Arch.: 90 ECTS

FULL TIME

1 Year (3 Semesters, September to August)

COURSE FEE

The fee for this course is €6,500 plus an additional approximate fee of €450 for an overseas field trip.

PART TIME

N/A

APPLICATION

Visit
<https://www.cit.ie/course/CRCARCH9>
 and <https://www.ucc.ie/en/ckr42/>
 Non-EU closing date: 15th June 2019
 Non-EU Applicants: See page 10

LOCATION

Cork Centre for Architectural Education,
 Douglas Street, T12 AD7R Cork.

Overview

The Master of Architecture Degree is a joint course between Cork Institute of Technology and University College Cork and, and operates as a full-time course extending over 12 months. The course has been designed to provide a qualification in architecture under Article 46 of Directive 2005/36/EC, the Building Control Act 2007, and is required by the RIAI before starting a minimum period of post-qualification supervised practical experience in preparation for the RIAI Examination in Professional Practice, Registration and/or RIAI Membership.

The established philosophy of CCAE is defined by a commitment to excellence in design, and consideration of wider cultural and theoretical phenomena. This framework is extended into the Masters Programme, where students will pose certain questions on the spaces and cities we inhabit, through a process of critical questioning and the dual acts of text and assemblage. Central to enabling these investigations and explorations - will be the series of prominent academics and architectural practitioners contributing to this Programme. With their involvement, you will be encouraged to participate in a challenging academic environment. You will be required to address problematic and uncertain questions raised by changes in contemporary society, and provide convincing new design propositions that suggest how we might operate in such evolving environments.

Delivery

Full-time

No. of weeks per semester: 13
 No. of timetable hours week: 10 - 15
 Which days: Variable
 Duration: Three semesters

Admission Requirements

Candidates must meet the following criteria:

Hold a BA/BSc (Hons) degree in Architecture, awarded on the equivalent of not less than 240 ECTS credits, from an accredited school of architecture, passed at Second Class Honours Grade II (2:2) or higher;

Or

*Holders of BA/BSc (Hons) Architecture degree with less than Second Class Honours Grade II (2:2) PLUS a period of work-based learning presented in the form of a portfolio of a standard equivalent to, or higher than, Second Class Honours Grade II.

*Note: In addition to the minimum criteria, all applicants are required to submit a portfolio of architectural design work to be evaluated by at least two of the following: Centre Director, Associate Director and Programme Coordinator or their nominees who will assess the suitability of the candidate for the Cork Centre for Architectural Education Master of Architecture course. Candidates may be called for interview. Admission to the programme will be subject to the approval of the Cork Centre for Architectural Education.

Modules

All modules are worth 5 credits (ECTS) unless otherwise noted.

SEMESTER 1

Design Research: Cultures and Context
 Design Research: Technology Transformations
 Design Research Studio: Investigation and Formation (20 ECTS)

SEMESTER 2

Design Project (30 ECTS)

SEMESTER 3

Exhibition Design and Implementation (15 ECTS)
 Documentation and Dissemination of Design and Design Process (15 ECTS)

Enquiries

All correspondence by e-mail should be titled 'Master of Architecture query', and addressed to

Jason M. O'Shaughnessy
 MArch Programme Coordinator
 Cork Centre for Architectural Education, Douglas Street, T12 AD7R, Cork.

E-mail: jason.oshaughnessy@cit.ie
 Phone: +353 (0)21 420 5684

SCIENCE & INFORMATICS

MSc in Cloud Computing	37
MSc in Information Security	38
MSc in Information Design & Development	39
MSc in Software Architecture & Design	40
MSc in Artificial Intelligence	41
MSc in Data Science & Analytics	42



Cloud Computing (M.Sc.)

CREDIT VALUE

M.Sc.: 60 ECTS

ONLINE

Online over 24 months

COURSE FEE

€10,800
(3 Instalments of €3,600)

LOCATION

Online

APPLICATION

Apply online at
<https://cs.cit.ie/cloud>
Closing date: 4th September 2019

Overview

Cloud Computing refers to the practice of using a network of remote servers hosted on the Internet to store, manage, and process data, rather than a local server or a personal computer. The MSc in Cloud Computing programme was designed to equip graduates with the detailed knowledge, specialist architectural and technical skills required to design and implement cloud based solutions, and services.

The programme content seeks to reflect current and likely future practice in cloud planning and management, the design and management of virtual environments, data analytics, the consolidation of data centres, security techniques in multi-tenant virtualised environments and related areas that contribute to the building of both private and public cloud environments. CIT hosts its own private cloud infrastructure to support the delivery of modules giving students 24/7 access to state-of-the-art cloud computing labs. All lectures are delivered online by academic and industry experts.

This innovative master's programme was developed in conjunction with key industry stakeholders, such as EMC, VMWare and many other companies. The programme offers the opportunity to learn about cloud in the cloud. CIT hosts its own private cloud infrastructure to support the delivery of modules. Lectures are delivered online by industry and academic experts and are recorded for subsequent playback on any device.

Designed to address the widening practical and theoretical skills shortage in cloud computing the programme delivers content that follows best practice in industry. It has a strong applied emphasis which is supported by in-depth theoretical knowledge. The continuing trend of skills shortage in this area is predicted to increase the global demand for cloud computing graduates.

Graduates may also wish to continue to PhD level in this exciting field of study.

Delivery

Online

No. of weeks per semester: 13

No. of timetable hours week: 6

Which days: Normally two nights a week

Duration: Three semesters

The MSc in Cloud Computing is taught online using Cloud based technologies, so students can learn about the cloud in the cloud. Learning technologies such as Blackboard, Adobe Connect and virtualised lab infrastructures are just some of the systems that are used to deliver this innovative programme. Lectures, which are delivered at night are streamed live over the Internet and recorded to facilitate easy playback for students. This offers great flexibility to students as they can access their lectures and labs anytime, anywhere on any device that has a Web browser. It is a testament to the online delivery platform in CIT that students can participate in the programme irrespective of their physical location or working status.

Admission Requirements

Entry to the MSc in Cloud Computing will require a minimum of a Level 8 Honours Degree in Computing or in a cognate discipline. As this programme is designed specifically for computing professionals working in the IT industry only graduates with experience will gain direct entry into this programme.

Enquiries

Dr Donna O'Shea
Department of Computer Science
Cork Institute of Technology
Bishopstown Cork
T12 P928 Ireland

Phone: +353 21 4335116
E-mail: Donna.OShea@cit.ie or cs@cit.ie
Web: <http://cs.cit.ie/cloud>

Modules

The programme contains challenging and interesting modules delivered by lecturers who are experts in Artificial Intelligence. You will also be presented with opportunities to work on modern research case studies linked to the domain expertise of staff in the department. The programme places significant emphasis on student learning by doing. It adopts a practical, hands-on, approach to learning, where all modules are fully assessed using continuous assessment methods. There are no formal end of semester written examinations and this ensures that you will learn by doing from the first module to the last.

SEMESTER 1 (AUTUMN - YEAR 1)

Managing Virtual Environments
Cloud Strategy Plan & Management
Scripting for System Automation
Free Choice Module (Various)

SEMESTER 2 (SPRING - YEAR 1)

Data Centre Networking
Research Practice & Ethics
Data Analytics
Free Choice Module (Various)

SEMESTER 3 (AUTUMN - YEAR 2)

Cloud Security
Cloud Storage Infrastructures

SEMESTER 4 (SPRING - YEAR 2)

Research Project

Module descriptors can be viewed
www.cit.ie/course/CRKCLDC9
Recognition of Prior Learning
information is available at
www.cit.ie/rpl



Information Security

(M.Sc.)

CREDIT VALUE

M.Sc.: 90 ECTS

COURSE FEE

Online EU & Non EU: €9,000

Full-time on Campus:

EU Applicants: €6,500.

Non EU Applicants: €12,000

APPLICATION

EU Applicants: Apply online
<https://cs.cit.ie/security>

Closing date: 4th September 2019

Non-EU Applicants: See page 10

FULL TIME

1 Year

3 Semesters

PART TIME

Also delivered on-line over 24 months

LOCATION

See below

Overview

Information security can be defined as the protection of information and information systems from unauthorised access, use, disclosure, disruption, modification, or destruction in order to provide confidentiality, integrity, and availability.

Today, Information Security is becoming a function of increasing importance for the continued operation of commercial entities. The increasing level of interconnectedness of information networks and the reliance of business models on this interconnectedness has resulted in a network currently (the Internet) that has over a yottabyte of information stored, much of which is unsecured. This continuing trend is predicted to strongly increase the importance of Information Security within most multinational entities.

This programme is designed to produce graduates with advanced theoretical and practical skills in Information Security and a demonstrated ability to perform research on topics related to this field of study.

This programme aims to fill the ever increasing skills gap in this area and delivers material that follows the most current practise. Upon successful completion of this programme the student will both understand and deploy the most advanced methods to protect information at rest, in transit, and at work.

Delivery

Part Time

Fully Online (Material and Assessments)

No. of weeks per semester: 13

Which days: Normally two nights a week

Full Time

CIT Bishopstown Campus

No. of weeks per semester: 13

No. of timetable hours/week: 16

Which days: Monday - Friday

The MSc in Information Security part time offering is taught fully online and is designed specifically for computing professionals working in the IT industry. The modules are assessed by online continuous assessment. The programme is hands-on in nature and provides the learner with detailed working knowledge of the tools used in the field of Information Security. Online lectures are delivered to students 2 evenings per week. Lectures are streamed live over the Internet and recorded to facilitate easy playback for learners.

The full time offering is taught both online and Bishopstown Campus.

Admission Requirements

Entry to the MSc in Information Security will require a minimum of a Level 8 Honours Degree in Computing or in a cognate discipline.

Enquiries

Vincent Ryan
Department of Computer Science
Cork Institute of Technology
Bishopstown Cork
T12 P928 Ireland

Phone: +353 21 4335112

E-mail Vincent.Ryan@cit.ie

Web: <http://cs.cit.ie/security>

Modules

The programme places significant emphasis on student learning by doing. It adopts a practical, hands-on, approach to learning, where all modules are fully assessed using continuous assessment methods. There are no formal end of semester written examinations and this ensures that you will learn by doing from the first module to the last.

SEMESTER 1 (AUTUMN)

Network Security & Forensics
Incident Response & Forensics
Scripting for System Automation
Cloud Security
Malware Investigations
Data Analytics
Free Choice Module

SEMESTER 2 (SPRING)

Security Management and Law
Offensive Security
Applied Cryptography
Malware Reverse Engineering
Threat Intelligence
Software Vulnerabilities
Free Choice Module

SEMESTER 3 (SUMMER)

Research Project

Module descriptors can be viewed
www.cit.ie/course/CRKINSE9



Information Design & Development (M.Sc.)

CREDIT VALUE

M.Sc.: 90 ECTS

COURSE FEE

€6,300
(€1,400 per Semester + €2,100 for
30 Credit Project in Semester 4)

APPLICATION

Visit <https://cs.cit.ie/idd>
Closing date: 4th September 2019

ONLINE

Online over 24 months

LOCATION

Online

Overview

Information Developers are individuals who bridge the gap between subject matter experts and that of the end user. The role of information developers is becoming increasingly important given that society is being driven by technology and information developers provide the voice in communicating how issues incorporating technology are framed and developed. The Society of Technical Communication (STC) define information developers or technical communicators as individuals that communicate using an instruction based focus on technical or specialised topics using technology. In essence, information development and technical communications ensures that designs, products, systems and methodologies are documented and conveyed to their target audience to maximise its business value to the organisation.

Simply put - if it is not worth documenting, it is not worth anything.

Over the past number of years, the manner by which information developers perform their role has been impacted by technological advancements in Information and Communication Technologies (ICT) and modern day practitioners need skills from not just Humanities but also Computing and Business domains. The programme seeks to provide a modern day practitioner with the opportunity for in depth study of the advanced rhetorical, compositional theories, project management, and technical skills necessary for them to be leaders in designing, composing, managing, and editing content using a standardised methodological approach using XML based technologies such as DITA.

Delivery

Online

No of weeks per semester: 13

No of timetable hours week: 6

Which days: Normally two nights a week

The MSc. in Information Design and Development is delivered and accessed fully online using state of the art Cloud based virtualisation technologies. Learning technologies such as Blackboard and Adobe Connect are some of the systems that are used to deliver this innovative programme. Lectures are delivered online by night and streamed live over the Internet and recorded to facilitate easy playback to students.

This method of delivery allows students to participate on the programme from anywhere in the world allowing them to avail on continuous professional development in the field of information development of technical communications. The programme offer great flexibility to students as they can access their lectures and labs anytime, anywhere on any device that has a Web browser.

Admission Requirements

Applicants who hold a Level 8 degree in any discipline are eligible to apply for the MSc in Information Development programme. Applicants who do not hold a Level 8 degree but have significant industrial experience will be considered on a case by case basis.

Enquiries

Dr Donna O'Shea
Department of Computer Science
Cork Institute of Technology
Bishopstown Cork
T12 P928 Ireland

Phone: +353 21 4335116
E-mail: Donna.OShea@cit.ie or cs@cit.ie
Web: <http://cs.cit.ie/idd>

Modules

The programme places significant emphasis on student learning by doing. It adopts a practical, hands-on, approach to learning, where all modules are fully assessed using continuous assessment methods. There are no formal end of semester written examinations and this ensures that you will learn by doing from the first module to the last.

SEMESTER 1 (AUTUMN - YEAR 1)

XML in Technical Communications
Information Design & Development

SEMESTER 2 (SPRING - YEAR 1)

Information Experience
Information Strategy
Research Practice & Ethics

SEMESTER 3 (AUTUMN - YEAR 2)

Document Project Management
Multimedia Production
Information Analytics
Free Choice Module

SEMESTER 4 (SPRING - YEAR 2)

Research Project

Module descriptors can be viewed www.cit.ie/course/CRKINDD9
Recognition of Prior Learning information is available at www.cit.ie/rpl



Software Architecture & Design (M.Sc.)

CREDIT VALUE

M.Sc.: 60 ECTS

COURSE FEE

€6,500

APPLICATION

Apply online at <https://cs.cit.ie/sad>
Closing date: 4th September 2019

DURATION

Online over 24 Months

LOCATION

Online

Overview

This programme is designed for software professionals, architects, and senior system design engineers. Managers of architecture teams will also benefit from this programme.

The programme aims to form part of the evolutionary path that a software developer takes to become a software architect, allowing each student to advance their technical career path.

Students will learn about the role of a software architect in creating an extensible and maintainable software solution by applying abstract knowledge and patterns to software architecture, and design. The traditional role of a software architect will also be critically assessed in the face of agile development methodologies and the adoption of tools, and practices that avoid or decouple up front systems or architectural design.

The programme is taught by industry and academic experts who are either practicing software architects, senior technical architects or research active academics in the field.

Software architecture spans a number of pillars which include the application, system, software and enterprise. Application architecture represent the fundamental building blocks of software and at this layer an architect needs to make decisions about the programming language, the constructs, libraries and frameworks that will be used to develop software.

It is rare that an application lives in isolation and typically a system is composed of multiple collaborating applications. At this system level, software architects focus on issues such as reliability, interoperability and integration.

Software architecture is also concerned with the significant elements of the software system from the structure and design of the code to deployment of that code to the live environment. At this layer, a software architect will focus on security, reliability, authentication, performance etc. Across these pillars, software architects make architectural decisions that shape a system and design decisions to ensure his/ her vision is realised.

The MSc in Software Architecture & Design programme will provide students with the principles and concepts involved in the analysis and design of large software systems. The programme was developed with significant input from industry's leading experts.

The programme is focused on developing a holistic view, seeing the bigger picture to understand how a software system works as a whole. This approach helps to differentiate software development and software architecture, it also helps to understand how somebody progresses from software development to a software architecture role.

Admission Requirements

An honours primary degree in a Computing Discipline or equivalent.

Enquiries

Dr Donna O'Shea
Department of Computer Science
Cork Institute of Technology
Bishopstown Cork
T12 P928 Ireland

Phone: +353 21 4335116
E- mail: Donna.OShea@cit.ie or cs@cit.ie
Web: <http://cs.cit.ie/sad>

Modules

The programme places significant emphasis on student learning by doing. It adopts a practical, hands-on, approach to learning, where all modules are fully assessed using continuous assessment methods. There are no formal end of semester written examinations and this ensures that you will learn by doing from the first module to the last.

SEMESTER 1 (AUTUMN - YEAR 1)

Software Architecture & Design
Software Process Engineering
Programming Language Design
Free Choice Module (Various)

SEMESTER 2 (SPRING - YEAR 1)

Scalable Microservices
Research Practice & Ethics
Decision Analytics
Free Choice Module (Various)

SEMESTER 3 (AUTUMN - YEAR 2)

Algorithm Analysis & Design
Declarative & Concurrent Prog.
Free Choice Module (Various)

SEMESTER 4 (SPRING - YEAR 2)

Research Project

Graduates may also wish to continue to PhD level in this exciting field of study.

Module descriptors can be viewed www.cit.ie/course/CRKSDEV9
Recognition of Prior Learning information is available at www.cit.ie/rpl



Artificial Intelligence (M.Sc.)

CREDIT VALUE

M.Sc: 60 ECTS

COURSE FEE

EU Applicants: €6,500
Non-EU Applicants: €12,000

APPLICATION

EU applications: Apply online at
<https://cs.cit.ie/ai>
Closing date: 4th September 2019
Non-EU Applicants: See page 10

FULL TIME

1 year (2 semesters)

PART TIME

Also delivered online over 24 months.

LOCATION

CIT Bishopstown Campus

Overview

Artificial intelligence (AI) is a field of computer science that enables computers and machines to perform tasks normally requiring human intelligence.

Its many applications range from chess-playing robots and autonomous cars to speech, image, and language processing, robotic manufacturing, and surveillance systems.

In the twenty-first century, AI has experienced a resurgence following concurrent advances in computer power, large amounts of data, and theoretical understanding. AI techniques have now become an essential part of the technology industry, helping to solve many challenging problems in computer science.

The programme content delivers a comprehensive range of topics, integral to the study of AI. These include machine learning, deep learning, natural language processing, optimisation and big data processing to name but a few. Graduates of the programme may also wish to continue to PhD level in this exciting field of study.

Delivery

No. of weeks per semester: 13

Which Days: Monday - Friday

Admission Requirements

An honours primary degree in a Computing Discipline or equivalent.

Are you an analytical thinker who enjoys working with intelligent computer systems? Do you like solving challenging problems? Have you got strong coding and mathematical skills? Would you like to know more about topics such as Machine Learning, Knowledge Representation, Metaheuristic Optimisation, Big Data Processing, Deep Learning, Decision Analytics, Research Practice and Ethics? Do you hold an honours degree in Computer Science, Engineering or in a cognate discipline? If so, this Master of Science in Artificial Intelligence degree is the right choice for you.

Enquiries

Dr Ted Scully
Department of Computer Science
Cork Institute of Technology
Bishopstown Cork
T12 P928 Ireland

Phone: +353 21 4336140
E-mail: Ted.Scully@cit.ie or cs@cit.ie
Web: <http://cs.cit.ie/ai>

Modules

The programme contains challenging and interesting modules delivered by lecturers who are experts in Artificial Intelligence. You will also be presented with opportunities to work on modern research case studies linked to the domain expertise of staff in the department.

The programme places significant emphasis on student learning by doing. It adopts a practical, hands-on, approach to learning, where all modules are fully assessed using continuous assessment methods. There are no formal end of semester written examinations and this ensures that you will learn by doing from the first module to the last.

SEMESTER 1 (AUTUMN)

Practical Machine Learning
Knowledge Representation
Metaheuristic Optimisation
Big Data Processing
Research Practice & Ethics
Natural Language Processing
Recommender Systems
AI for Sustainability
Computer Simulation & Analysis
Free Choice Module

SEMESTER 2 (SPRING)

Deep Learning
Decision Analytics
Research Project
Robotics and Autonomous Systems
Planning and Scheduling
Fraud and Anomaly Detection
Free Choice Module

Module descriptors can be viewed
www.cit.ie/course/CRKARIN9



Data Science & Analytics (M.Sc.)

CREDIT VALUE

M.Sc.: 90 ECTS

COURSE FEE

EU Applicants: €6,500
Non-EU Applicants: €12,000

APPLICATION

Apply online:
<https://www.cit.ie/course/CRSDAAN9>
Closing date: 4th September 2019

DURATION

Full-time: 3 semesters

LOCATION

Bishopstown Campus

Overview

Data Science has become a hugely important topic in recent years with a growing demand for practitioners in a variety of industries. With ever increasing growth in data generation and collection, the value of data to industries is highly dependent on appropriate analysis of the data. Consequently, data science and analytics has become a core component of both public and private sector companies wishing to maintain competitiveness.

The MSc in Data Science and Analytics at CIT, a collaboration between the Department of Mathematics and the Department of Computer Science, aims to develop highly skilled and competent graduates in the rapidly expanding field of Data Science. This collaborative programme provides graduates with a thorough grounding in the theory of data science, while allowing graduates to become highly proficient in the technical and practical skills of a modern data scientist. The course will equip graduates with the skills to gather and store data, process data using advanced statistics and techniques such as machine and deep learning and deliver new insights and knowledge from the collected data.

The programme has been designed with industry experts to ensure that in the first two semesters graduates develop core skills in programming, database management, statistical modelling, time series analysis, machine learning and data visualisation and interpretation. The industry based capstone project in Semester 3 is a key component of this MSc programme. The project allows the learner to apply the knowledge, skills and competences acquired in the taught modules to the research and development of a real-world data science problem.

Admission Requirements

- H2.1 in a Level 8 Honours degree
- Alternatively, graduates with a H2.2 Honours degree will be considered, subject to having three years relevant experience.
- The language of academic instruction as well as administration is English. Non-native speakers of English require a minimum IELTS score of 6.0 to be considered for entry into this postgraduate programme. Appropriate EFL training courses are offered by CIT to applicants who meet the academic programme entry requirements but who need to increase their proficiency in the English language.

Enquiries

Dr David Goulding
E: mathematics@cit.ie
T: 021 – 4335123

Modules

The full-time MSc in Data Science & Analytics will run over three semesters, i.e. fifteen months. Each semester accrues 30 credits.

The Semester 1 schedule consists of six taught modules (each 5 credits). The learner acquires a foundation in Mathematics, Statistics and Computer Science, with the signature module DATA8001 Data Science & Analytics overarching the other five modules of this semester.

SEMESTER 1

Data Science and Analytics
Introduction to R for Data Science
Applied Statistics and Probability
Scientific Programming in Python
Mathematical Methods and Modelling
Data Management Systems

SEMESTER 2

Statistical Data Analysis
Data Visualisation & Analytics
Distributed Data Management
Time Series & Factor Analysis
Applied Machine Learning
Research Methods

In Semester 3, the MSc learner undertakes one capstone project module (DATA9003 Research Project – Data Science) worth 30 credits.

MUSIC

MA in Music & Technology	44
MSc in Music & Technology	44
MA in Music (Performance/Conducting/Composition)	45



Music & Technology

(M.A. / M.Sc.)

CREDIT VALUE

M.A., MSc.: 90 ECTS

COURSE FEE

EU Applicants: €4,000
Non-EU Applicants: €12,000

APPLICATION

Visit: Apply online: <https://www.cit.ie/course/CRGMUTE9>

Closing date: 31st August 2019, but late applications may be facilitated

Non-EU Applicants: See page 10

FULL TIME

1 Year (3 Semesters)

PART TIME

Please contact Course Coordinator

LOCATION

CIT Cork School of Music (CSM),
Union Quay, Cork (primarily) and CIT
Bishopstown Campus

Overview

The Masters in Music & Technology has a very practical, hands-on approach. Our ethos is that this cross-disciplinary programme will foster a combination of technical know-how and confidence with creativity and musicality. A Master of Arts award or Master of Science Award can be chosen depending on the student's pathway through the programme.

The Masters in Music & Technology offers training and experience to enhance the talents and skills necessary to work in the creative industries of the future. The programme takes full advantage of the CSM's state-of-the-art performance spaces, Recording Suite (Live, Control, and Editing rooms), Electronic Music Studio, dedicated laboratories and many performance opportunities. A cross-faculty body of experienced lecturers and practitioners in the field delivers the programme. Adding this training to the opportunity to work with some of the finest up-and-coming musicians in Ireland, from all walks of life, will result in an exceptional Music Technologist.

The programme aims to enable learners from different disciplines to interact confidently and competently to with, and find employment within, several fields of study and industry.

Delivery

Full-time

No. of weeks per semester: 13

No. of timetable hours week: 13

Which days: Monday to Friday

Duration: Three Semesters

Part Time: Arrangements should be discussed with the course coordinator.

The first two semesters (September - January and January - June) each have a 30-credit load, delivered through a combination of 5-credit mandatory and elective modules. Independent work is undertaken over the final June - August period in respect of a 30-credit project. The type of award, MA or MSc, depends on the nature of the project undertaken during this period.

Admission Requirements

Applications are invited by way of a submitted on-line application form and shortlisted candidates will be interviewed in July/August, if required, where the applicant must display musical competence. Normally, an Honours 2.2 Degree in a cognate area is required and work-based experience is an advantage. Recognition is given for relevant prior learning where the applicant does not have a relevant Honours Degree (www.cit.ie/rpl), and the applicant should contact the course coordinator.

Enquiries

Hugh McCarthy
Department of Musicianship &
Academic Studies
CIT Cork School of Music
E: hugh.mccarthy@cit.ie
T: +353 (0)21 480 7324

Modules

All modules are worth 5 credits (ECTS) unless otherwise noted.

The elective modules afford the learner the opportunity to broaden his/her skills set in other disciplines or to deepen his/her skills set in Music Technology. The elective modules offered in any given year are delivered subject to demand and resource availability.

SEMESTER 1

Recording Studio 1
Computer Music 1
Acoustics and Psychoacoustics

Elective

Problem Solving & Programming
Interpreting Sound & Music
Audio Electronics
Digital Culture
Marketing & Media Law
Core Instrumental Studies 5
Core Instrumental Studies 7
Devised Performance Project
Ethics & Aesthetics

SEMESTER 2

Recording Studio 2
Computer Music 2
Sound Synthesis

Elective

Music & Technology 4 - Live Sound
Audio Signal Processing
Cybercultures
Core Instrumental Studies 6
Core Instrumental Studies 8
Devised Performance Project
Lighting Design

SEMESTER 3

Elective

MA: Electronic Composition Project
(30 ECTS)
MSc: Music & Technology Research
(30 ECTS)



Music (Performance/Conducting/Composition) (M.A.)

CREDIT VALUE

M.A.: 120 ECTS

COURSE FEE

EU Applicants: €4,000
Non-EU Applicants: €12,000

APPLICATION

Visit: <https://csm.cit.ie/masters-application>
Closing date: 31st May but some flexibility may be available

Non-EU Applicants: See Page 10

Apply on-line at: csm.cit.ie

FULL TIME

2 Years (4 Semesters)

PART TIME

N/A

LOCATION

CIT Cork School of Music (CSM),
Union Quay, Cork

Overview

This programme is aimed specifically at:

- Recent graduates wishing to pursue their studies to Masters level
- Established professionals returning to update their skills and qualifications

A full-time, 120 ECTS-credit, taught course for performers (instrumentalists/singers/accompanists/chamber ensembles), conductors and composers

- Instrumentalists/singers receive weekly individual lessons and ensemble coaching sessions as appropriate
- Conductors receive weekly individual lessons and supervised rehearsals
- Composers receive weekly individual lessons and supervised reading/performance/recording sessions

Delivery and Assessment

For detailed information about the Course delivery and assessment, please visit <https://www.cit.ie/course/CRGMUSC9>

Performers are examined primarily through a series of three public recitals/concerto performances; conductors will be examined through a series of three public concerts and associated rehearsals; composers will be examined primarily through the submission of a portfolio of compositions in three instalments. As an alternative to the third public performance, suitable candidates may undertake a dissertation, or a composition or conducting module. The programme will include opportunities to participate in masterclasses with international artists as well as workshops with professionals operating in the international cultural sector.

During the first semester all students are required to submit a Planning Portfolio exploring planning issues, repertoire and preparation of performances/compositions. Students will also benefit from training in recording technology and interact with peers from the Taught MA in Music and Technology course. Using the school's state-of-the-art facilities, students will be able to obtain high quality recordings of their performances as well as producing demo recordings. A free choice module is also taken during the first semester. This can be in a cognate area, such as Research Methodology or Music and Technology, but need not be directly related to music.

All students take a common Professional Studies course over the first two semesters dealing with entrepreneurial, organisational, presentational, and technological issues common to all performers/composers, and (during the second semester) each student delivers a case study arising from the lecture material to the cohort of postgraduate students and leads the ensuing seminar.

In the last semester, candidates will also be required to submit a Reflective Portfolio for examination. Although this will consist primarily of written reflections on the learning experiences relating to the core practical elements of the course, it will also include a written summary of the candidate's seminar presentation for the Professional Studies element of the course.

Established professional performers, conductors and composers are entitled to apply for RPL (Recognition of Prior Learning) in respect of the assessment requirements by submitting scores/recordings for assessment. Students may also avail of the Erasmus programme to earn credit through study at a partner institution.

Delivery

Full-time

No. of weeks per semester: 15

No. of timetable hours week: Variable

Which days: Variable

Duration: 2 Years (4 Semesters)

Admission Requirements

Either a primary degree (a BMus degree or a BA degree with Music as the major subject) awarded with at least 2nd Class Honours in a relevant area, or an equivalent degree in another area together with a recognised professional qualification awarded by a Conservatory or International Examining Body in Performance at Licentiate or Fellowship level), or be prepared to submit to a QQI-approved qualifying process.

Candidates will be required to present for audition/interview, normally in April-June. Late applications may be accepted subject to resources being available.

How to Apply

Applicants other than CIT Cork School of Music BMus Degree Year 4 students must submit an online application form (csm.cit.ie), curriculum vitae, and in the case of performers/conductors, one recording of at least two contrasting pieces (total length 15 minutes) or for composers a portfolio of work. CIT Cork School of Music BMus Degree Year 4 students must submit an online application form (csm.cit.ie) and their final results in performance modules will determine qualification for entry.

Enquiries

Ciara Moroney
Department of Keyboard Studies
CIT Cork School of Music
E: ciara.moroney@cit.ie
T: +353 21 432 6893

ART, DESIGN & MEDIA COMMUNICATIONS

MA in Art Therapy	47
MA in Art & Process	48
Professional Master of Education (Art & Design)	49
MA in E-learning Design and Development	50
MA in Journalism and Digital Content Creation	51
MA in Public Relations with New Media	52



Art Therapy (M.A.)

CREDIT VALUE

M.A.: 90 ECTS

FULL TIME

2 Years
(4 Semesters, September to May)

Overview

The programme aims to equip Art Therapy practitioners with a range of therapeutic skills and interventions to work with both individual and group clients in a range of health and community settings it follows three strands of learning:

- **Theoretical Studies (25 Credits)**
- **Experiential Art Therapy Training (20 Credits)**
- **Clinical Placement and Professional Studies (45 Credits)**

Supervision of the clinical experience is central to the art therapy training and is provided in small groups at Crawford College and individually on placement.

Students are encouraged to experience a number of differing placement situations over their training. Please note that students must have their placements in a new setting and not at their workplace.

Because of the clinical placement component it is a condition of entry that all applicants will be subject to a Garda Clearance procedure.

On completion of this 90 credit modular course, individuals can register with the professional body, Irish Association of Creative Arts Therapists (IACAT).

Delivery

Full-time & Part-time

No. of weeks per semester: 13

No. of timetable hours week: 12hours
College & 12hours Clinical Placement
Which days: Variable
Duration: Four Semesters

The training can be completed either a full-time two years or part-time over three years. Attendance of four days per week on the full-time course (two college days and two clinical placement days) and two days per week on the part time course (one college day and one clinical placement day)

COURSE FEE

EU Applicants: €7,950
Non-EU Applicants: €12,000

PART TIME

3 Years
(6 Semesters, September to May)

Admission Requirements

Applicants normally require:

- An Honours degree, or equivalent, in Visual Art. Where graduate qualifications are not in the visual arts, for example, Psychiatric Nursing, Social Work or Teaching, evidence of a substantial and developing body of current and recent art work is essential
- Minimum of one year, or equivalent, full-time clinical/care work in an area relevant to art therapy, paid or voluntary.
- This work may be, for example, in Health or Social Services, Special Education, Community Care or Day Centres, with clients who have a mental illness, learning or physical disability
- Strong portfolio of personal artwork showing an understanding of an appropriate art form, the art-making process showing the applicants relationship and connection to their creative process
- Two satisfactory references from clinical and professional persons who have knowledge of the candidate's education, training and experience
- A good understanding of therapeutic and professional working of Art Therapy and the implications of working as a therapist.
- Pre-course experience in personal therapy or counselling is preferred:
- A limited number of places are available to non-standard applicants.

APPLICATION

EU Applicants: Apply online
<https://www.cit.ie/course/CRATHPY9>
Closing date: 30th April 2019
Non-EU Applicants: See page 10

LOCATION

CIT Crawford College of Art & Design,
46 Grand Parade, Cork City

Enquiries

Louise Foott, Department of Arts in Health and Education
E: louise.foott@cit.ie
T: +353 21 433 5256
W: <https://crawford.cit.ie>

Modules

All modules are worth 5 credits (ECTS) unless otherwise noted.

SEMESTER 1

Art Therapy History & Theory
Clinical Theory & Research Group
& Personal Process Placement
Context Preparation Introductory Placement

SEMESTER 2

Experiential Frameworks Clinical Placement Support Clinical Practice (10)

SEMESTER 3

Experiential Contexts Advanced Clinical Practice (10) Advanced Supervision Art Therapy Research Proposal

SEMESTER 4

Reflective Approaches Practice Evaluation Art Therapy Research Project (10)



Art & Process (M.A.)

CREDIT VALUE

M.A.: 90 ECTS

Overview

MA in Art & Process (MA:AP) is an intensive and stimulating taught masters. This research-intensive programme enables students to investigate, develop, and position their art practice in a rigorous learning environment.

MA:AP offers: innovative approaches to learning, individual studio spaces, access to college workshops & facilities, professional experience through collaborative projects, peer-to-peer exchange, and a bespoke visitor lecture series. Students engage in seminars, tutorials and lectures to strengthen their individual practice.

Semester 1 CRITIQUE:

The spring semester opens the course with an intensive period of interaction and events, contextualising art practice within contemporary critical thinking through seminars, visiting lectures, and a study trip.

Semester 2 RESEARCH:

This semester is defined by independent research. Having rehearsed research methodologies, this is a period to reflect on and consolidate practice.

Semester 3 PRESENTATION:

The third semester is defined by intensive studio development with a high level of critical input, which builds towards an exhibition of work. This exhibition is then the object of further learning opportunities, through a final period of critical reflection, characterised by writing, documentation, and working with audience groups.

Lecturing staff includes contemporary practitioners: Ailbhe Ní Bhriain, Colin Crotty, Padraig Spillane, Lucy Dawe-Lane and UCC's Lewis Glucksman Gallery curatorial team.

Visiting lecturers have included: Clodagh Emoe, Maud Cotter, John O'Connell, Jesse Jones, Alice Mutter, Matt Packer, Pluck Projects, Mark Garry, Tina Kinsella, Gavin Delahunty, Stephen Brandes, Anna Konik, Niall Sweeney - Pony LTD, Gema Tipton, Dawn Williams, Something & Son, Woodrow Kernohan, Fergal Gaynor, Sam Keogh, Lisa LeFeuvre, John Gerrard amongst others.

Student Grants

Grants are awarded for each academic year (i.e. September - June), therefore, if you are awarded a grant when you start the course in January this only covers you for the first 2 semesters within the first academic year which ends in June for SUSI. You may need to go through a renewal process with SUSI to ensure your grant continues for the following academic year i.e. September - January.

COURSE FEE

EU Applicants: €4,500

Non-EU Applicants: €12,000

For information on visa requirements, please visit www.cit.ie/international

Scholarships

MA:AP is delighted to offer a scholarship awarding full tuition fees for 2020. All applicants are eligible for the scholarship which will be awarded based on strength and potential of the applicant's existing practice. To be considered for the tuition scholarship please submit a short text (max. 2 paragraphs) summarising your practice and achievements to date as well as your reasons for applying for the scholarship.

Deadline for Applications for Tuition Fees Scholarship is 1st December, 2019. This is in addition to the normal admission application and should be submitted to ccad.enquiries@cit.ie – with subject box clearly referencing: MA:AP Tuition Fees Scholarship 2019 & Name of Applicant.

Delivery

Full-time

Duration: Three semesters, starting in late January.

No. of semesters: 3

No. of weeks per semester: 13

No. of timetable hour's week: approx. 10
Which days: Primarily Monday & Tuesday, and introductory workshops in Semester 1 are delivered over the first few weeks throughout the week.

Duration: Three semesters

Admission Requirements

MA:AP welcomes applicants with diverse backgrounds. Those holding a Level 8 Honours Bachelor Degree in Fine Art or an associated discipline, with a minimum of an Honours 2.2 (or equivalent) are eligible to apply for the programme. Graduates from other subject areas are invited to apply provided they meet the entry requirements.

Applicants who hold a Level 8 award at pass level or a Level 7 award (or equivalent) may be considered on the basis of significant relevant experience.

In certain circumstances mature applicants with long-standing professional experience will be considered for eligibility through recognition of prior and experiential learning, policies for which are well established in CIT (www.cit.ie/repl).

FULL TIME

1 Year (3 Semesters, late January to early December)

PART TIME

2 Years

LOCATION

CIT Crawford College of Art & Design, 46 Grand Parade, Cork City

APPLICATION

EU Applicants: Apply online at <https://www.cit.ie/course/CRAARTP9>
Online Application will open in May for course commencing in January 2020. Deadline for application: 31 October for following January.

MA in Art & Process operates a rolling closing date, the date published above is the regular closing date after which offers are made to successful applicants. Late applications will continue to be accepted up until 30th December for course commencing in late January 2020 however, if you wish to be considered for Scholarship, application must be received by 1st December.

All applicants will be invited to interview. Applicants will be required to pay an acceptance fee of €450 online if a place on the course is offered. This fee is deductible from the overall course fee.

Non-EU Applicants: See page 11

Modules

All modules are worth 5 credits (ECTS) unless otherwise noted.

SEMESTER 1

MA: Research Practices 501

MA: Fine Art Studio 501 (15 ECTS)

MA: Institutions and practices

MA: Situations 501

SEMESTER 2

MA: Fine Art Placing Practice

MA: Fine Art Studio 502 (15 ECTS)

MA: Contextual Research 502 (10 ECTS)

SEMESTER 3

MA: Fine Art Studio 503 (20 ECTS)

MA: Fine Art - Productions

MA: Interactions 503

Enquiries

Trish Brennan

Department of Fine Art & Applied Art

E: trish.brennan@cit.ie

T: +353 21 433 5200

W: <https://crawford.cit.ie>



Professional Master Of Education (Art & Design) (Joint programme with UCC)

CREDIT VALUE

120 ECTS

FULL TIME

2 Years (4 Semesters, September to June)

COURSE FEE

EU Applicants: €10,800
Non-EU Applicants: See Page 13
Please note that these fees are payable to UCC. e-mail: fees@fin.ucc.ie

PART TIME

N/A

APPLICATION

Please visit
<https://www.cit.ie/course/CRARTED9>
Closing date: 31st March 2019

LOCATION

CIT Crawford College of Art & Design,
46 Grand Parade, Cork City &
UCC Campus, College Road, Cork City

Overview

The programme is offered jointly by CIT Crawford College of Art & Design (CCAD) and University College Cork (UCC), it is organised in partnership with second-level schools, normally located within a 50 km (30 mile) radius of Cork city.

On successful completion of the programme, students will have acquired the professional knowledge, the diverse subject knowledge and the understanding and skills that are required to teach Art and Design in a second-level school. Students will have gained practical experience in two contrasting school settings, and will have developed their ability to respond flexibly to the diverse and changing needs of students aged 12 to 18 years. Students will have been challenged, encouraged and invited to question their beliefs and assumptions about the purpose of education, the nature of teaching and learning and the role of the teacher in the 21st century.

The Professional Master of Education (Art and Design) (PME (Art and Design)) is recognised by the Teaching Council of Ireland for the purpose of registration as a post-primary teacher of Art and Design in Ireland and the EU.

Delivery

Full-time

No. of weeks per semester: 12

No. of timetable hours week

Year 1: 8 - 10

Year 2: 6 - 7

Which days: Monday to Friday

Duration: Four semesters

Year 1:

- Curriculum-related Art and design Practice, and the Teaching of Art and Design (10 ECTS)
- School-based activity (30 ECTS) i.e., direct teaching of Art and Design (20 ECTS), and research and professional experiences portfolio (10 ECTS)
- Curriculum-related Art and Design Practice, and the Teaching of Art and Design 1
- Foundation Studies - areas covered are philosophy, history, psychology and sociology of education; inclusive education, and curriculum and assessment (20 ECTS)

Year 2:

- School placement-related activity (35 ECTS) i.e., direct teaching of Art and Design (30 ECTS), and a collaborative seminar looking at contemporary issues in Irish schools (5 ECTS).
- The Teaching of Art and Design 2 (5 ECTS)
- Designing Curriculum and Assessment for the Contemporary Classroom (5 ECTS)
- Professional Research Paper in Education (10 ECTS)
- Literacy and Numeracy Development in the Post Primary Classroom (5 ECTS)

Admission Requirements

Candidates must have a minimum requirement, a H.2.2 primary degree in a Fine Art or Design discipline(s) that is recognised by the Teaching Council of Ireland as qualifying you to teach Art and Design at post-primary level. In some cases equivalent qualifications that are recognised by the Teaching Council for the teaching of Art and Design may be considered. Eligible applicants will also be interviewed.

Garda Vetting:

This programme requires applicants to undergo a Garda Vetting process. This requirement is due to the mandatory external placement element of the programme which will bring the applicant into contact with children or vulnerable adults and in which they will assume positions of trust.

Teaching Council information:

www.teachingcouncil.ie or
E: info@teachingcouncil.ie
T: +353 (0)1 651 7900 or
LoCall 1890 224 224

Enquiries

Louise Foott,
Department of Arts in Health
and Education
E: louise.foott@cit.ie
T: +353 21 433 5256
W: <https://crawford.cit.ie>



E-Learning Design and Development (M.A.)

CREDIT VALUE

M.A.: 60 ECTS

COURSE FEE

EU & Non EU Applicants €5,250

APPLICATION

Apply online at
<https://www.cit.ie/course/CRHELDE9>
 Closing date: 20th November 2019

ONLINE

1 Year
 (2 Semesters, January to September)

LOCATION

Online

Overview

E-learning as a field of study, as an approach to teaching and learning and as an industry has evolved considerably over the last decade and a half. Governments and policy makers have made e-learning a central imperative of their political educational rhetoric and provide substantial funding initiatives to support its development and mainstreaming. Related policies and requirements with regard to lifelong learning, the knowledge-based economy, work-based learning and globalisation combine with the benefits of e-learning as a delivery and support tool to make e-learning one of the most rapidly growing sectors in the worldwide education and training and digital media industries.

Programme Aim and Orientation:

In the above context the programme seeks to produce developers of cutting edge, educationally effective e-learning solutions. Our graduates, subsequently, will go on to work as designers and developers either directly as part of the burgeoning e-learning sector or in support of in-house e-learning and learning technology departments which are becoming mainstream in a number of other areas and industries.

The programme is a Master of Arts and, as such, reflects a special orientation towards, variously, creativity, culture and design, rather than technology per se.

Admission Requirements

Direct entrants to this 60 credit award would typically require a Level 8 qualification in fields such as multimedia, digital media, media applications or a relevant area of design. Applicants without such qualifications will also be considered if they can show an equivalent level of learning gained through practice or any other means (see CIT's policy for Recognition of Prior Learning www.cit.ie/rpl). All other applicants are invited to undertake a new 30 credit online Certificate in Media Design and Development (CR_HDMTE_8) which runs from September to December.

In all cases final admission to the course will be on the basis of interview.

Enquiries

Dr Gearóid Ó Súilleabháin
 Department of Media Communications
 E: gearoid.osuilleabhain@cit.ie
 T: +353 21 433 5933

Modules

All modules are worth 5 credits (ECTS) unless otherwise noted.

The programme is delivered entirely online using many of the same e-learning tools and technologies which also form the course curriculum. All registered students are also, uniquely, given access to a virtualised desktop which provides all their multimedia software and remote storage requirements for the duration of the course. This means the programme may appeal to those who, for whatever reasons, cannot commit to attending regular face-to-face lectures and labs or who otherwise appreciate the flexibility and convenience of studying online.

SEMESTER 1

E-Learning Instructional Design
 Education Research & Proposal (10 ECTS)
 New Media Workplace
 Narrative & Games for Learning
 E-Learning Authoring

SEMESTER 2

E-learning Thesis (20 ECTS)
 E-learning Project (10 ECTS)



MA in Journalism and Digital Content Creation (M.A.)

CREDIT VALUE

M.A.: 90 ECTS

COURSE FEE

EU applicants €5,000
Non EU Applicants - e-mail fees@cit.ie
for details

APPLICATION

Apply online at
<https://www.cit.ie/course/CRHJDCC9>
Closing date: 16th September 2019
Non-EU Applicants: See page 10

ONLINE

1 Year (3 Semesters, September to August)

LOCATION

Bishopstown Campus, blended delivery

Overview

The course is a well-rounded, professional programme that prepares graduates for positions in the media. The programme blends journalistic tools and techniques with content creation using new technologies and digital media to prepare students for the new media workplace. The programme has a strong connection with the media industry. Graduates of this programme are well equipped with the requirements to operate as today's digital journalists and content creators.

The programme is aimed at those wanting to launch a career in journalism, as well as established journalists wanting to upskill, and those who want to work as content creators and storytellers in the areas of marketing, advertising, public relations and general communications.

Along with our strong connections with industry, even as they learn, our students are producing work that is published in the national media. We're equipping our students with all the skills that are basic requirements for today's digital journalists and content creators: shooting and editing video, creating audio and podcasts, using social media, developing an online presence and strong connections with industry.

Delivery

The programme is full time and is delivered via blended learning. Most of the modules are delivered in a classroom environment at the Bishopstown Campus and a small number of modules in each of the two semesters are delivered online, using state-of-the-art communication and education technology.

Admission Requirements

Entry requirements for this course will be in accordance with standard Institute admissions procedures. Entrants will be expected to hold minimum of a 2.2 honours degree.

Admission to the course will be on the basis of interview. Recognition of Prior Learning (RPL) will be applicable for candidates entering from the workplace or applying for admission from other institutes. Visit www.cit.ie/rpl

Enquiries

Frank O'Donovan
Department of Media Communications
E: frank.odonovan@cit.ie
T: +353 21 432 6117

W: <https://crawford.cit.ie/courses/journalism-and-digital-content-creation/>

Modules

All modules are worth 5 credits (ECTS) unless otherwise noted.

The elective modules afford the learner the opportunity to broaden his/her skills set in other disciplines such as Studio Technology and Creative Thinking and Design

SEMESTER 1

Writing for Media
Media History and Society
Audio Broadcasting
Research Methods and Practice
Multimedia Production
New Media Workplace

SEMESTER 2

Features and Web Writing
Media and Communications Law
Visual Broadcasting
Cybercultures
New Media Production

Elective

Studio Technology
Creative Thinking and Design
Event & Project Management
Free Choice Module

SEMESTER 3

Journalism MA Project.



Public Relations with New Media (M.A.)

CREDIT VALUE

M.A.: 90 ECTS

COURSE FEE

EU Applicants: €4,550
Non-EU Applicants: €12,000

APPLICATION

EU Applicants: Apply online at
<https://www.cit.ie/course/CRBPRNM9>
Closing date: 18th August 2019
Non-EU Applicants: See page 10

FULL TIME

1 Year (3 Semesters, September to June)

PART TIME

See below

LOCATION

CIT Bishopstown Campus

Overview

This innovative MA programme offers the opportunity to gain a comprehensive understanding of public relations as a form of communication and pays particular attention to the growing importance of digital and interactive media on the practice of public relations and professional communications.

By developing student's research, planning, managerial and multimedia skills the course aims to produce graduates who can display leadership and show the capacity for innovation within the dynamic and fast evolving professional communications industry. Course content focuses strongly on PR tools and techniques, particularly within the growing new media environment, and on the increasing globalisation and convergence of the media industries.

Through liaison with PR professionals and by working on 'live' industry projects, the course aims to equip graduates with the knowledge, skills and competencies required to effectively function as a public relations professional in an era of high-speed and interactive digital communications.

Mentorship Programme

From September 2018 students will participate in the Public Relations Mentorship Programme. This programme aims to prepare students for a career in the communications industry through a series of presentations and one-to-one contact with industry professionals. Students will prepare a career development plan, liaise with the CIT Careers Service, participate in professional networking, both on and offline and develop important career-oriented skillsets aimed at enhancing employability and career prospects.

Delivery

Full Time

No. of weeks per semester: 13
No. of timetable hours week: 16
Which days: Monday to Thursday
Duration: Three semesters

Part Time:

Applicants may choose to undertake this programme on a part-time basis. Part-time students take modules on a phased basis and achieve the programme qualification over a number of academic years.

Admission Requirements

Entry requirements for this course will be in accordance with standard Institute admissions procedures. Entrants will be expected to hold minimum of a 2.2 honours degree.

Admission to the course will be on the basis of interview. Recognition of Prior Learning (RPL) will be applicable for candidates entering from the workplace or applying for admission from other institutes.

Enquiries

Emmett Coffey
Department of Media Communications
E: emmett.coffey@cit.ie
T: +353 21 432 6118

Modules

All modules are worth 5 credits (ECTS) unless otherwise noted.

The elective modules afford the learner the opportunity to broaden his/her skills set in other disciplines or to deepen his/her skills set in the wider professional communications environment. The elective modules offered in any given year are delivered subject to demand and resource availability.

SEMESTER 1

PR Theory & Application
Ethics & Social Responsibility
Multimedia Production
Media Writing
Research Methods and Practice

Elective

Strategic Digital Marketing
Strategic Management 1

SEMESTER 2

PR and New Media
New Media Production
Cybercultures
Bus Communication & Online Writing
Public Relations Campaigns

Elective

Media Law, Ethics & Professional Practice
Event & Project Management
The Business Environment

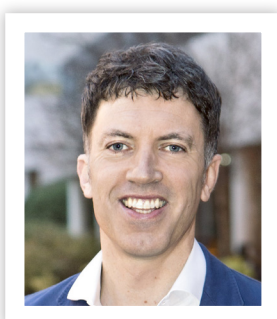
SEMESTER 3

Public Relations MA Project (incorporating Mentorship Programme) 30 ECTS

GRADUATE PROFILES AT A GLANCE

PhD (DOCTOR OF PHILOSOPHY)

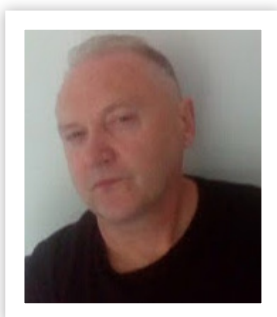
DR AIDAN HARNEY



“Completing my PhD at CIT was an extremely positive experience. I was fortunate to have not one, but two, terrific supervisors. Their enthusiasm for my research question generated great vitality. Their flexibility in terms of availability and mobility was of immense assistance to me, given the nature of my role. The rigor they applied to the process throughout was very welcome. The CIT on-line library is a rich research utility and I found all of the support staff to be most helpful. All in all, the process was demanding and challenging but very worthwhile in terms of expanding my capability to engage in research and generate new knowledge. I would like to extend thanks to the great team at CIT.”

PhD (DOCTOR OF PHILOSOPHY)

DR ALPHONSUS (ALFIE) KEARY

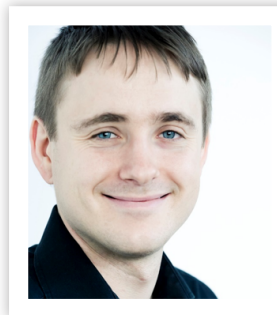


“Having worked in the ICT sector throughout my career, returning to education at CIT to complete my PhD with the Department of Computer Science provided an ideal mix of academic and real-world practical opportunities.

My research centred around data analytics and machine learning. Working with the CIT SIGMA group and the Departments of Mathematics was instrumental for me completing my thesis. Staff at both facilities were extremely generous with their time and assistance helping me with the achievement of my research goals. Their focus on both highly validated academic research in conjunction with real-world research applications has been paramount for me. There were certainly challenges over the years, and when, during a number of the extremely tough phases any PhD researcher will naturally go through, it has been the belief that my supervisors and all at CIT wanted me to succeed, this is what kept me as a mature student on the path to successfully completing my PhD. Thanks to you all at CIT, for such an incredible rewarding and life-changing learning journey.”

MA IN MUSIC PERFORMANCE

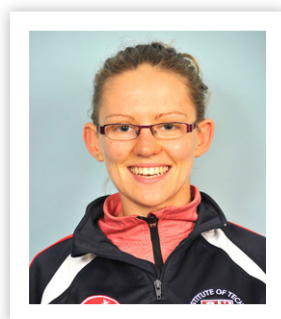
ALEX PETCU



Alex graduated with a First Class Honours MA in Music Performance in 2013, the year in which he won the Irish Freemasons' Young Musician of the Year competition. He is a busy freelance musician and performs regularly with the RTÉ National Symphony Orchestra, RTÉ Concert Orchestra, Crash Ensemble, and Irish Chamber Orchestra. In addition to his orchestral work, he has also performed as a soloist with both RTÉ orchestras. Alex has been named the 2015 Rising Star at the National Concert Hall, Dublin.

PHD (DOCTOR OF PHILOSOPHY)

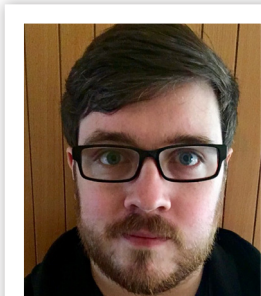
DR LINDA BOLGER



"My time in CIT as a postgrad was fantastic. The staff are so friendly and approachable and the facilities on campus are second to none. It's just an amazing environment to be in. I completed my PhD in the Department of Sport, Leisure and Childhood Studies. The lecturers and other postgrads became not just supervisors, lecturing staff and colleagues, but great friends that I'm sure I'll stay in contact with. During my PhD, I was lucky enough to get some great experience lecturing and leading practical sessions on a variety of different modules. I also had the opportunity to present my research at a number of different conferences, including an international conference in Essen, Germany. I also played camogie with CIT and made friends with some fantastic people who are extremely passionate, dedicated and great at what they do. The CIT GAA club was more like a family than a sports club and it was great to play with and be part of the club. I highly recommend CIT, my time there was amazing with very fond memories."

MA IN JOURNALISM AND DIGITAL CONTENT CREATION

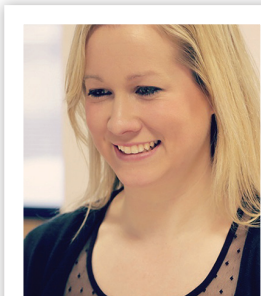
GREG MURPHY



"The skills I learned during the Journalism with New Media MA have played a vital role in the work I do - from photoshopping skills, to audio and visual editing - the course has definitely taught me some of the most vital abilities I need working in the online environment. The biggest contribution from the MA is the website development and management module as I now am one of the people tasked with the day to day running of IrishExaminer.com, as well as social media and community management. My experience at CIT has been one of the best in my life and has no doubt been the sole reason I find myself in an amazing job with the Irish Examiner."

MA IN PUBLIC RELATIONS WITH NEW MEDIA

GILLIAN LYONS



"The course contained a good mix of PR, digital marketing as well as content writing - something not many courses offer despite the massive growth in the digital sector.

The course provided me with vital skills and knowledge to kick start my career in Digital Marketing. I have worked on exciting projects including social campaigns, e-learning courses, animations, and overseeing new website builds for well-known clients such as Club Orange, Fáilte Ireland, and the GAA. The lecturers were fantastic and I could not recommend the MA in PR with New Media course highly enough!"

MA IN E-LEARNING DESIGN AND DEVELOPMENT

SARAH MCGOWAN



“The MA in E-Learning Design and Development had the perfect structure for me as someone working full-time. While it did involve a lot of dedication, it was flexible enough that I could coordinate my time around daily work and family commitments. The lecturers were fantastic and supportive throughout, and they provided me with all the additional support I needed! The topics covered gave a great insight into the different areas of E-Learning and Learning & Development in different industries, and even helped me to pursue new career opportunities within this field. I am now a Learning and Development manager within Ireland's fastest growing start-up, eShopWorld.”

MA BY RESEARCH IN MUSIC

CORAL O’SULLIVAN



Coral is a Law Graduate of University College Cork and a graduate of the BMus Programme at the CIT Cork School of Music. In 2013, Coral was awarded an M.A. by Research for her work on The Commissioned Works of the Contemporary Music Seminars of the Cork International Choral Festival 1962-2012: an Annotated Catalogue. She is currently employed as a Lecturer in Oboe at the CIT Cork School of Music and also at the County Cork School of Music. Coral is a Librarian with the Cork County Library and Arts Service, and is an active freelance musician.

MA IN HUMAN RESOURCE MANAGEMENT

PAUL KENT



“Employed in a Technical Learning & Development role within PepsiCo, I support the Capability building process for our associates worldwide. Working with a worldwide audience and building capability by doing more than training, I needed a programme that would give me both a theoretical and practical comprehension of how we can continue to develop people. As well as developing the right people, we need to understand how we attract, recruit and retain these people. With limited exposure to the HR environment, this programme gave me the opportunity to build on the knowledge that I had and grow this for the benefit of my organisation. The content initially attracted me to the programme but I have also got great exposure to newer areas and it has been a great source of personal development. The programme provides a broad learning base for students across many aspects including Employment Law, Business and even some Psychology. Human Resources is becoming a strategic element in the modern business environment and people with this skillset can offer a competitive advantage. CIPD accreditation was also very important for me. I would highly recommend the MA HRM. It is not a programme designed solely for the HR professional; I believe that anyone with a role to play in the strategic development of the people within their organisation will benefit greatly from this programme. There is a strong blend of academic learning and practical knowledge ensuring that skills are practiced immediately and it is this application that makes the course challenging and interesting but ultimately effective and rewarding.”

MA IN JOURNALISM AND DIGITAL CONTENT CREATION

PETER O'MAHONY



"My primary motivation for undertaking this programme was to strengthen my personal and professional skills and competencies and it certainly exceeded my expectations in that regard. It provides a platform for students to learn from experienced and knowledgeable lecturers while also giving you the opportunity to learn from other students' experiences in an academic environment that is dynamic and collaborative, yet flexible. This programme has the advantage of providing you with the opportunity to collaborate with many multi-national and indigenous organisations which in turn assists in building your professional network. It enables you to learn from various business owners and executive leaders as you undertake real life group assignments which assist organisations in overcoming specific business challenges. Prior to commencing this programme, I held the position of Laboratory Manager with Merck, Sharpe & Dohme. Through application of the skills, knowledge and experience acquired on the Masters, I have since received two promotions, with my current role being an Interim Director in Analytical, Development and Validation with Merck, Sharpe & Dohme."

MA BY RESEARCH

JENNY DEMPSEY



"A perfect balance of space and support. I had a clear idea of my research subject and, from the start, was given the space to explore this area. At the same time, I was provided with an array of college supports: ranging from access to the well-stocked library, to workshops in academic and technical skills and most importantly, two insightful tutors who shared many hours of encouragement, guidance and advice."

MASTER OF BUSINESS

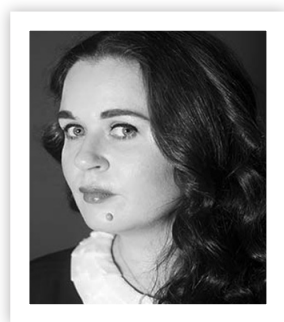
BOBBY KENNEDY



"I found the two years to be quite challenging from a time and content perspective but ultimately very rewarding. The inclusion of team-based live case studies enhanced the experience and provided exposure to a range of businesses, small and large, in a variety of sectors. The key takeaway for me has been the broader view I now take on a daily basis. I was previously very narrowly focused on my day to day role, whereas I am now significantly more aware of the entire environment in which I operate. I find myself thinking much more about the direction I am heading and how I might get there. I am engaging in far more conversations outside my direction."

MA IN JOURNALISM AND DIGITAL CONTENT CREATION

JENNY REGAN



“Through guest lectures and site visits I got the chance to meet leaders in the broadcasting and media industries. We had an opportunity to see how programmes are made, the many different roles involved and what happens behind the scenes. We learned so much about what’s happening now in the industry and had the chance to engage with producers, presenters and editors. Those networking opportunities secured me my job.”

All information in this publication is accurate at the time of printing. Changes of courses, options, fees and dates may occur between printing and September 2019. In addition, factors such as the unexpected unavailability of staff, or a level of application below that which is minimally required to allow a course to run, may make it practically impossible, or prohibitively expensive for the Institute to offer an option listed in this publication. Any offer of a place made to you is subject to your consenting to the incorporation of this notice as a term of any such offer.

All applicants should make all reasonable effort prior to registration to ensure that the course/programme they are registering for meets their expectations, by contacting the relevant course coordinator or prospective supervisor/research coordinator.

The information set on these pages is intended as a guide only and shall not be deemed to form a contract between the Institute and an applicant or any third party.

E&OE



www.cit.ie/graduateschool



CIT School of Graduate Studies
t: 021 433 5099 e: graduate.school@cit.ie